

10 MOSS
ARTS
CENTER
10TH ANNIVERSARY SEASON



VT VIRGINIA
TECH.

ROANOKE SYMPHONY ORCHESTRA

Holiday Pops Spectacular

Saturday, December 2, 2023, 4 PM

Street and Davis Performance Hall, Anne and Ellen Fife Theatre



NO-NO BOY

Thurs., Feb 1, 7:30 PM

Julian Saporiti details the Asian American experience through his innovative songwriting and multi-media project, No-No Boy.

10 MOSS
ARTS
CENTER

10TH ANNIVERSARY SEASON

The Nutcracker

presented by the Blacksburg Ballet

Saturday, December 9

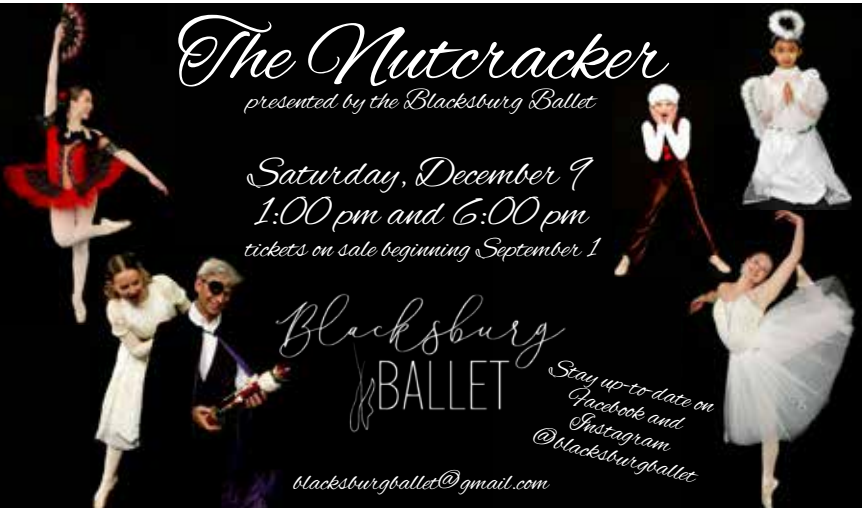
1:00 pm and 6:00 pm

tickets on sale beginning September 1

Blacksburg
BALLET

*Stay up-to-date on
Facebook and
Instagram
@Blacksburgballet*

blacksburgballet@gmail.com



ROANOKE SYMPHONY ORCHESTRA

Holiday Pops Spectacular

DAVID STEWART WILEY, CONDUCTOR

EMME CANNON, VOCALIST

Roanoke Symphony Chorus

JOHN HUGO, DIRECTOR

Roanoke Valley Children's Choir

KIM DAVIDSON, DIRECTOR

This performance is co-presented with the New River Valley
Friends of the Roanoke Symphony Orchestra.

*The Roanoke Symphony Orchestra is partially supported
by funding from the Virginia Commission for the Arts,
the National Endowment for the Arts, and the Secular Society.*



PROGRAM

JOY TO THE WORLD

AMUNDSON

Choruses and orchestra

OSE SHALOM

(THE ONE WHO BRINGS PEACE)

HEBREW/ ARR. LEAVITT

Choruses and orchestra

SILENT NIGHT

ARR. TYZIK

Cannon, choruses, and orchestra

HARRY'S WONDROUS WORLD

WILLIAMS

Orchestra

SUITE FROM ***IT'S A WONDERFUL LIFE***

TIOMKIN

Cannon, choruses, and orchestra

I. ***Prologue***

II. ***Theme***

III. ***Christmas Eve Finale***
and ***Auld Lang Syne***

MARCH OF THE TOYS

from ***BABES IN TOYLAND***

HERBERT

Orchestra

GESÙ BAMBINO

YON

Children's choir and orchestra

TELL ME IT'S THE TRUTH

ELLINGTON/ARR. WILEY

Cannon, choruses, and orchestra

INTERMISSION

A CHRISTMAS SCHERZO

ARR. SEBESKY

Orchestra

***DECK THE HALLS FROM
MANNHEIM STEAMROLLER***

ARR. DAVIS

Orchestra

BELIEVE* from *THE POLAR EXPRESS

SILVESTRI/BALLARD

Cannon and orchestra

YOU'LL NEVER WALK ALONE

RODGERS

Cannon, choruses, and orchestra

MARCH* from *THE NUTCRACKER

TCHAIKOVSKY

Orchestra

SLEIGH RIDE EXPRESS

ANDERSON/ARR. WILEY

Cannon, choruses, and orchestra

SANTA CLAUS IS COMIN' TO TOWN

ARR. BRENNAN

Cannon, choruses, and orchestra

CHRISTMAS FAVORITES SING-ALONG*

ARR. NORRIS

Cannon, choruses, and orchestra

BOWS: CELTIC CHRISTMAS DANCE

ARR. MOORE/ARR. WILEY

Orchestra

**Sing-along texts on the following page.*

SING-ALONG TEXTS

SILVER BELLS

City sidewalks, busy sidewalks
Dressed in holiday style.
In the air there's a feeling of Christmas.
Children laughing, people passing
Meeting smile after smile
And on every street corner you hear
Silver bells, silver bells
It's Christmas time in the city.
Ring-a-ling. Hear them ring.
Soon it will be Christmas Day.
Sleigh bells ring. Are you list'ning'
In the lane snow is glist'ning:
A beautiful sight. We're happy tonight

WINTER WONDERLAND

Walking in a winter wonderland.
Gone away is the bluebird.
Here to stay is the new bird.
He sings a love song as we go along
Walking in a winter wonderland.
In the meadow we can build a snowman,
Then pretend that he is Parson Brown.
He'll say, "Are you married"
We'll say, "No, man"
But you can do the job when you're in town.
Later on, we'll conspire
As we dream by the fire
To face unafraid the plans that we made
Walking in a winter wonderland.

FROSTY THE SNOWMAN

Frosty the snowman was a jolly, happy soul
With a corncob pipe and a button nose
And two eyes made out of coal.
Frosty the snowman is a fairy tale they say.
He was made of snow but the children know
How he came to life one day.
There must have been some magic in
That old silk hat they found,
For when they placed it on his head
He began to dance around. Oh!
Frosty the snowman was alive
as he could be
And the children say he could
laugh and play
Just the same as you and me.
Just the same as you and me.

SING-ALONG TEXTS, cont.

RUDOLPH THE RED-NOSED REINDEER

Rudolph, the Red-Nosed Reindeer
Had a very shiny nose
And, if you ever saw it,
You would even say it glows.
All of the other reindeer
Used to laugh and call him names.
They wouldn't let poor Rudolph
Join in any reindeer games,
Then one foggy Christmas Eve
Santa came to say,
"Rudolph, with your nose so bright,
Won't you guide my sleigh tonight?"
Then how the reindeer loved him
As they shouted out with glee,
"Rudolph, the red-nosed reindeer,
You'll go down in history!"

WHITE CHRISTMAS

I'm dreaming of a white Christmas,
Just like the ones I used to know:
Where the treetops glisten and children listen
To hear sleighbells in the snow.
I'm dreaming of a white Christmas
With ev'ry Christmas card I write.
May your days be merry and bright
And may all your Christmases be white.

ROANOKE SYMPHONY ORCHESTRA

DAVID STEWART WILEY, MUSIC DIRECTOR AND CONDUCTOR

FIRST VIOLIN

JOHN IRRERA,
concertmaster
VIOLAINE MICHEL
LARRY CHANG
BROOKE MAHANES
SAMUEL THOMPSON
KAY ROONEY
ZACH WINDSOR

SECOND VIOLIN

AUDREY LUND,
assistant principal
EMILY ILYES
VLADIMIR KROMIN
CAROLINE STEPHENSON
GEORGE FIGUEROA
DONNA STEWART
JARED HALL
RICHARD DOWNS

VIOLA

DIANE PHOENIX
SAM PHILLIPS
LINDSEY PARSONS
SARAH PFISTER
ELIZABETH LOCHBRUNNER

CELLO

KELLEY MIKKELSEN,
principal
EVAN RICHEY
JOHN KEANE
CESAR COLMENARES

BASS

MARA BARKER
MICHAEL PRIESTER
STUART WILLIAMS

FLUTE

ALYCIA HUGO
JULEE HICKCOX

PICCOLO

JULEE HICKCOX

OBOE

STEVEN KEYS
MEREDITH MCCREE

CLARINET

CARMEN EBY
JEFF MIDKIFF

RSO ROSTER, cont.

BASSOON

SCOTT CASSADA
REBECCA MEISEL

HORN

ABIGAIL PACK
DAKOTA CORBLISS
SANDY SERBINOWSKI
KAI SUMMERLIN

TRUMPET

PAUL M. NEEBE,
principal
THOMAS BITHELL

TROMBONE

JAY CRONE
DAYL BURNETT
DANDRICK GLENN

TUBA

BRANDON SMITH

TIMPANI

ROGER DUVAL

PERCUSSION

AL WOJTERA
MCKAYLA PHILLIPS

KIT

ERIC WILLIE

KEYBOARD

WAYNE GALLOPS

ELECTRIC GUITAR

MICHAEL HAVENS

BASS GUITAR

BRIAN WAHL

HARP

WINIFRED GARRETT

ROANOKE VALLEY CHILDREN'S CHOIR

KIMBERLY RUSE DAVIDSON , DIRECTOR

ALYSSA ALBAN

JOCELYN AUGUSTINOWICZ

BIBIANA BELL

RACHEL BRYANT

CALISSA BURKE

CHRISTINE BURR

ELLA CARLIN

SOPHIA CHILDERS

GRACE CORDLE

GISELE CROUSE

EMILY DUNCAN

CARLIE ELLIOTT

TURNER FAIRES

MARLEIGH FLORA

NICHOLAS FRATICELLI

ADDISON GARRETT

AVA GIANNINI

SOFIA GONZALEZ

CADE GREGORY

ANNE HAYDEN HALL

CHARLOTTE HALLY

LANEY HAVENS

ASHER HODGES

ELYSSA HOSTETTER

RYAN HUBBARD

JOSHUA KALLAN

LEILANI KEELE

JULIA LAMPKIN

GABBY LEE

LILYANA MATA DIAZ

PENLEY MOORE

MOLLY MURDOCK

KARLEIGH MURPHY

MAYA NIK-KHAH

ELIZA OTEY

JUDE PARKHURST

KAYLEE RIDENOUR

QUINN ROUDEBUSH

AYDAN RULEY

OLIVIA RUSSELL

JENNA SHIPP

JONAH SPENCER

CLAIRE SUBLETT

ABBY TARANTINO

OLIVIA TERRY

GRACE VOS

PIPER WALK

CARA WARDELL

GARRETT WATERS

SEVEN ZUSCHIN



BIOGRAPHIES

EMME CANNON, VOCALIST



The Roanoke Symphony Orchestra is pleased to welcome young vocalist Emme Cannon for her *Holiday Pops* debut this week. A native of Roanoke who is a real rising young star, Cannon is equally comfortable performing pop ballads, in musical theatre roles, classical favorites, and with alternative music. In a recent interview with the Roanoke Symphony Orchestra, she shared, "I am thrilled to return to the Roanoke Valley, a place where I had such wonderful music teachers and mentors. I feel like I am truly coming home for the holidays, surrounded by family and friends — and an orchestra that I love."

The Roanoke Times glowingly described her "hypnotizing voice and delivery." Cannon has been heard widely throughout the Boston area, including concerts at the Boston Book Festival, the Boston Calendar, and many others. Roanoke music lovers remember her fondly from a captivating performance at the Grandin Theatre at

Songwriters in the Round. Cannon's *Two Track* series performance has accumulated over 10,000 views. She is a compelling singer/songwriter who creates a unique feeling of being in the eye of the storm between peace and chaos with her captivating presence.

Cannon is a recent graduate from Boston's acclaimed Berklee College of Music, where she studied contemporary writing and production and songwriting. She has performed with full symphonies and bands in New England, including tribute concerts to Lady Gaga, Beyoncé, and many other contemporary stars. Her most recent release, *Can't Say No to You*, expresses forgiveness and self-realization in toxic relationships. Her first self-written and produced EP, *Home Planet*, explores aspects of life beyond this realm and finding love in life's uncertainties.

Find more information at emmecannon.com, and please join us in welcoming Virginia's own Emme Cannon to our 2023 *Holiday Pops!*

DAVID STEWART WILEY, MUSIC DIRECTOR AND CONDUCTOR



Roanoke Symphony Orchestra Maestro David Stewart Wiley has conducted such symphonies as Atlanta, Buffalo, Cincinnati, San Francisco, Milwaukee, Indianapolis, Minnesota, Saint Louis, Oregon, Hawaii, and Utah, as well as in dozens of countries in Asia, Africa, and Europe. Wiley made his triple debut with Boston Pops as conductor, composer, and piano soloist in Boston's historic Symphony Hall, and this busy season includes a return as guest conductor to Bari, Italy, with the Orchestra Sinfonico at the historic Teatro Petruzzelli. Wiley enjoys a multi-faceted and in-demand career as an orchestra builder, guest conductor, pops arranger, educator, and chamber music collaborator, and inspires and engages both orchestras and audiences.

BIOGRAPHIES, cont.

Under his direction since 1996, the Roanoke Symphony Orchestra (RSO) has experienced continued artistic growth, program innovation and expansion, and increased financial stability. Wiley's tenure with the RSO is a remarkable success story, with a diverse and impressive list of guest artists and composers and innovative commissions of new music. Wiley is an engaged and active community partner and recognized celebrity, having been named Roanoke's "Citizen of the Year" for his outstanding service and outreach. He was part of the leadership team who traveled to Denver as Roanoke received its seventh "All-American City" award. Wiley actively partners with schools and numerous arts and civic organizations, and the RSO and Wiley received a prestigious Distinguished Music Educator Award from Yale University for their partnership with city schools. The RSO produced its first live TV broadcast and collaborates with WVTF public radio to rebroadcast many of its concerts. Wiley's energetic work bringing classical music to youth in our minority communities has been steadfast, and he was honored by the NAACP as Citizen of the Year in the Arts for his service. He is a recipient of the Perry F. Kendig Prize for service to the arts and is a Paul Harris Fellow from Rotary International. He and his wife, Leah, were recently honored at the MS Society's Dinner of Champions for their leadership, and Wiley was honored during his 25th acclaimed RSO season by Governor Youngkin and a joint bipartisan resolution in the Virginia house and senate.

Wiley continues serve as music director and conductor of New York's Orchestra Long Island, continuing his commitment to education and outreach throughout Long Island. Wiley also enjoys a special relationship with Virginia's Blue Ridge Music Festival as artistic director, and previously served as assistant conductor of the Minnesota Orchestra and the Indianapolis Symphony Orchestra. As an experienced leader, Wiley plans and facilitates an innovative

experience with business executives and musicians together on stage, titled *Conducting Change*.

As a solo pianist with diverse classical, pops, and chamber music experience, Wiley has performed with numerous orchestras in the United States, including Boston, Minnesota, Indianapolis, Oregon, Honolulu, Wheeling, and West Virginia, performing major concerti by Baroque to contemporary, often conducting from the piano. He has made recital and chamber music appearances in China, Russia, Romania, Germany, Hungary, Italy, the Czech Republic, and Bulgaria. Numerous opera and ballet performances include the Aspen Opera Theater, IU Opera Theater, and the Moscow Ballet.

Summer engagements include the Aspen Music Festival, Brevard Music Center, Garth Newel, Wintergreen, Park City (Utah), Minnesota Orchestra Summerfest, and Sitka (Alaska) and Prince Albert (Hawaii) summer music festivals. From 1999 until 2006 Wiley was the artistic director and conductor of the Wintergreen Summer Music Festival, where he founded and built the festival orchestra, created the student academy, and led the festival to remarkable artistic growth in seven years, tripling the balanced budget.

Wiley's CDs include an album of French Cello Concerti with Zuill Bailey and the Roanoke Symphony on Delos International; Beethoven's Symphony no. 9, *Choral*, with the RSO and Choruses; and American Piano Concertos with Norman Krieger and the RSO on Artisie 4, which includes Wiley's third piano concerto. He has released *Wiley & Friends: Classical Jazz*, *American Trumpet Concertos* with the Slovak Radio Symphony/Neebe; a violin/piano duo CD, *Preludes & Lullabies*, with Akemi Takayama; *Sempre Libera* with soprano Adelaide Trombetta;

BIOGRAPHIES, cont.

a solo piano CD with all original compositions, *Full Circle*; and *Piano Bells*. As a composer, he wrote symphonic music for the film *Lake Effects*, which featured a symphonic soundtrack performed by the RSO, with Wiley conducting and original music by Kazimir Boyle and Wiley. Numerous orchestras, including the Boston Pops, continue to perform his music.

Wiley won the Aspen Conducting Prize, was assistant conductor for the Aspen Music Festival, and was awarded a Conducting Fellowship at Tanglewood. He holds both a doctor and master of music in conducting from Indiana University, a degree in piano performance with honors from the New England Conservatory of Music, and a degree in religion, *summa cum laude*, from Tufts University. For more information, please visit davidstewartwiley.com.

The Roanoke Symphony Orchestra has performed annually at the Moss Arts Center since our opening in 2013.

TELL US WHAT YOU THINK!



We'd love your feedback on this performance. If you complete the short survey, you can enter for a chance to win two tickets to Jazz at Lincoln Center Orchestra with Wynton Marsalis on Tuesday, January 23, 2024.

bit.ly/rso-pops23-feedback



10TH ANNIVERSARY SEASON

artscenter.vt.edu

A black and white photograph of an orchestra performing on a stage in a large concert hall. The musicians are seated in rows, and a conductor is visible in the center. The stage is illuminated by overhead lights, and the audience seating is visible in the foreground.

10 YEARS

is just the opening act.

When you support the Moss Arts Center, you're supporting the future of the arts in Southwest Virginia.

Help us continue to bring unforgettable arts experiences to people of all ages. A gift of any size makes a big impact.

Learn more about how you can support the Moss Arts Center at artscenter.vt.edu/support or contact **Paul Brammer** at pbrammer@vt.edu.



GIVE NOW

bit.ly/support-the-moss

PERFORMANCES | EXHIBITIONS | EXPERIENCES



MOSS ARTS CENTER

190 Alumni Mall, Blacksburg, VA 24061
540-231-5300 | mossartscenter@vt.edu

IN THE GALLERIES

THROUGH SUNDAY, DECEMBER 17



william cordova

can't stop, won't stop: tenets of southern alchemy

Ruth C. Horton Gallery

william cordova examines the visual aspects of transition and displacement, studying the evolution and adaptation of objects and perception across time and space. Constructing artworks composed of reclaimed elements, paint, gold leaf, and collage, cordova presents encoded representations of social systems and the material histories of objects and images.

THROUGH SUNDAY, DECEMBER 17



Laurie Steelink

Spirit Is Alive, Magic Is Afoot

Miles C. Horton Jr. Gallery and Sherwood Payne Quillen '71
Reception Gallery

Multidisciplinary artist Laurie Steelink is a citizen of the Akimel O'otham Nation and a member of the Gila River Indian Community. Exploring connections to her Native American roots, Steelink creates assemblages of found objects and reassembled paintings to question authenticity and consider spirituality. Using her creativity to reconnect with and to reference her ancestors, culture, and community, Steelink defines her work as an expression of her personal identities.



K-12 PROGRAMS AT THE MOSS ARTS CENTER

Experiences with the arts cultivate the next generation of creative thinkers, engage learners of diverse backgrounds, and foster community dialogue. The Moss Arts Center has been dedicated to providing K-12 students in the region with free, high-quality, and exciting arts programming since opening our doors in 2013. Through school-day matinee programs, gallery tours, in-school performances, and workshops with artists, we are passionate about serving our youngest community members and schools.

Learn more at bit.ly/moss-K12.

DID YOU KNOW?

The Moss Arts Center's portable and collapsible orchestra shell installs in a matter of hours. Featuring a curved, hard surface, the shell primarily acts as a monitor so that musicians can hear each other, but also provides modest amplification to the house, reflecting sound to the audience.

LAND ACKNOWLEDGEMENT

Virginia Tech acknowledges that we live and work on the Tutelo/Monacan People's homeland, and we recognize their continued relationships with their lands and waterways. We further acknowledge that the Morrill Land-Grant College Act (1862) enabled the commonwealth of Virginia to finance and found Virginia Tech through the forced removal of Native Nations from their lands in California and other areas in the West.

LABOR RECOGNITION

Virginia Tech acknowledges that its Blacksburg campus sits partly on land that was previously the site of the Smithfield and Solitude Plantations, owned by members of the Preston family. Between the 1770s and the 1860s, the Prestons and other local White families that owned parcels of what became Virginia Tech also owned hundreds of enslaved people. Enslaved Black people generated resources that financed Virginia Tech's predecessor institution, the Preston and Olin Institute, and they also worked on the construction of its building.

MOSS ARTS CENTER STAFF

OFFICE OF THE ASSOCIATE PROVOST FOR THE ARTS

Ruth Waalkes, *associate provost
for the arts and executive director,
Moss Arts Center*

Devair Jeffries-Lee, *program
director, Arts@VirginiaTech*

David Ehrlich, *outreach fellow
for the fine arts*

Molly Parker, *executive assistant*

ADVANCEMENT

Paul Brammer, *chief advancement
officer, Moss Arts Center and
University Libraries*

EXHIBITIONS

Brian Holcombe, *curator*

Laura Higgins, *exhibitions
program manager*

FINANCE AND ADMINISTRATION

Liz Scharman, *director
of administration*

Toni Cartee, *business manager*

Lori Compton, *housekeeper*

Austin Elliot, *building manager*

Matt Hudson, *IT specialist*

Angela McCroskey, *housekeeper*

Garrett Mitchell, *housekeeper*

Herman Noble, *building
operations manager*

Shirley Rose, *housekeeper*

Emily Wilkins, *fiscal technician*

MARKETING AND COMMUNICATION

Katie Gehrt, *director of marketing
and communication*

Susan Bland, *associate director
of communication*

Avery Eliades, *associate director
of content and digital strategy*

Shanin Glenn, *graphic design
manager*

Ellery Huffman, *marketing
coordinator*

PATRON SERVICES

Jonathan Boulter, *director
of ticketing and patron services*

Hannah Holbrook, *house manager*

Jamie Wiggert, *box office manager*

PRODUCTION

Doug Witney, *director
of production*

Adam Cook, *stage and rigging
supervisor*

Robert Gainer, *audio supervisor
and associate director of production*

Kyle Gavell, *lighting supervisor*

Laine Goerner, *production
and rentals manager*

Joe Ingram, *senior technician*

CJ Jessie, *senior technician*

Jackson Stitzer, *senior technician*

PROGRAMMING

Margaret Lawrence, *director
of programming*

Jon Catherwood-Ginn, *associate
director of programming*

Kari Heistad, *engagement
manager*

Beth Jessee, *artist services
assistant*

Sarah M. Johnson, *program
manager*

MOSS ARTS PARTNERS

The Moss Arts Partners (MAP) are ambassadors, advocates, and donors serving to advance and guide the mission of the Moss Arts Center. Thanks to our 2023-2024 MAP members for their leadership:

Rosemary Blieszner
Catherine Breske
Stacy Brown
Fred Carlisle
Clem Carter
Connie Froggatt
Steve Gerus
Ann Goette
Betty Hahn
Susan Hansen
Jim Monroe

Elizabeth Obenshain
Nancy Beville Prichard
David Reemsnyder
Judie Reemsnyder
Louise Ridenour
Minnis Ridenour
Jim Shuler
Margaret Shuler
Melinda Talley
Kelli Whitfield

EMERITUS MEMBERS

Erv Blythe
Lindsey Bowman
Constance Cedras
Sally Cox
Betty Davenport
Carole Davis
CY Davis
William Davis

Libby Drapeau
Rebecca Ghezzi
Candi Kelly
Anne H. Moore*
Sherwood P. Quillen
Bob Quisenberry
Mary Ann Walker

**deceased*

SPECIAL THANKS

We are grateful for the generosity of our patrons and donors who sustain the Moss Arts Center with their annual gifts. The impact of all contributions, no matter the amount, is significant in helping us transform lives through exploration and engagement with the arts and the creative process. We are honored to have received cash donations during the period of July 1, 2022, through June 30, 2023, from the following:

AMBASSADOR

Clem and Georgia Carter
Libby Drapeau

Dr. Mark and Connie Froggatt
in Memory of Sherry Penney

Ms. Elizabeth Hahn
and Mr. Douglas Chancey

Joseph A. Hopkins
and Linda W. Hopkins

Mr. Howard C. Huang
and Mrs. Laura A. Huang

Mr. Bruce Prichard and
Mrs. Nancy Beville Prichard

Ms. Sherwood P. Quillen

David and Judie Reemsynder
Don* and Carolyn Rude

Dr. James M. Shuler
and Ms. Margaret F. Shuler

PRODUCER

Dr. Rosemary Blieszner
and Dr. Stephen P. Gerus

Erv Blythe

Ms. Deborah L. Brown

Dr. E. Fred Carlisle and
Mrs. Elizabeth A. Obenshain

Ms. Constance Cedras

Dr. Vinod Chachra
and Mrs. Ranji Chachra

Mr. Mark A. Corwith
and Mrs. Jill L. Corwith

Dr. Charles Y. Davis
and Mrs. Carole C. Davis

The Easels

Ms. Ann Goette

Ms. Susan M. Hansen

Mrs. Tamara N. Hodsden

Mary V. Jones

Mrs. Candi M. Kelly
and Dr. J. Michael Kelly

Mrs. Sharon S. Polifrone

Mr. Minnis E. Ridenour
and Mrs. Louise Ridenour

Mr. Edwin H. Talley III
and Mrs. Melinda P. Talley

Mrs. Mary Ann Walker
and Dr. Kenneth J. Walker

ASSOCIATE

Mr. Thomas L. Ackiss
and Mrs. Ann L. Ackiss

Dr. Gregory T. Adel
and Mrs. Kimberly S. Adel

Ms. Kathryn C. Albright
Anonymous

Mrs. Rhonda K. Arsenault
and Dr. Lance E. Arsenault

Ms. Patricia C. Ballard

Mr. Andrew Beach
in Honor of Kit Bond

Joan D. Bellis
and Bobby Leftwich

Dr. Suzanne Bentley
and Dr. Ernest Bentley

Mr. Allan W. Beres
and Mrs. Amy Beres

Jo and Bud Brown
*in Memory of Donald
A. Drapeau*

Ms. Stacy G. Brown

Mr. J. S. Chaney
and Ms. Gael M. Chaney

Mrs. Sandra E. Chase
and Mr. Peter A. Chase

Dr. Cyril R. Clarke
and Dr. Jean Clarke

Larry and Patti Cowley
Steve A. Cox*

Virginia H. Cox*

The DeWitt Family
*in Memory of Joseph
L. DeWitt ('16)*

Dr. Glen I. Earthman*
and Mrs. Julie G. Earthman
Norman* and Nancy Eiss

Dr. Bill Epstein
and Vickie Epstein

Mr. Juan P. Espinoza
and Mrs. Kara Espinoza

Mr. James A. Everett III
and Mrs. Karen B. Everett

Nancy J. Felch

Dr. William J. Floyd
and Dr. Leslie D. Kay

Mr. Whiteford D. Grimes*
Hampton Roads Community
Foundation

Mr. John T. Hasselmann
and Mr. Keith R. Stemple

Dr. Deborah Hix
*in Memory of Robert
S. Schulman*

Mr. and Mrs. George
P. Hlusko Jr.

Dr. Patricia B. Hyer
Steve Jacobs
in Memory of Cathy Jacobs

Mrs. Janice B. Litschert

Ms. Jeanne S. Lutze

Ronnie* and Faye Marcum

Mrs. Barbara E. Mayo
and Dr. William F. Mayo, Sr.

Janice McBee and Ben Johnson

Mr. Michael D. McCarthy
and Dr. Nancy E. Meck

SPECIAL THANKS

Dr. Michael A. McMahon
and Ms. Drema K. McMahon

Dr. Anne McNabb
and Dr. Richard M. Burian

Dr. Amanda J. Nelson
*in Memory of Bonnie
and Paul Nelson*

Mr. Thomas E. Olson
and Mrs. Martha A. Olson

James D. Penny
and Pamela J. Penny

Mrs. Linda J. Pfeiffer

Leo and Ellen Piilonen
in Memory of Don Rude

Linda and Ray Plaut

Dr. Ellen W. Plummer

Ms. Felice N. Proctor

Mr. G. Robert Quisenberry
and Mrs. Susan G. Quisenberry

Mr. and Mrs. James G. Rakes
Rebecca Riley

Mary and Ron Rordam

G. Davis Saunders Jr.

Ms. Elizabeth A. Scharman

Dr. Richard D. Shepherd and
Mrs. Laurie W. Shepherd

Dr. Edward F. D. Spencer
Connie and Richard Swanson
Penny Vasileff

Ms. Kelli Whitfield

Kathy J. Williams

Ms. Beverly A. Williges
*in Memory of Dr. Robert
C. Williges*

Dr. Gary M. Worley
and Ms. Sandra M. Worley

FRIEND

Anonymous (2)

Mr. Anargyros A. Anton

Mr. Gustavo Araoz
and Mrs. Laine C. Goerner

Dr. Jeffrey E. Arbogast

Mr. Robert P. Arnold II
in Honor of John Howell

Dr. Amy P. Azano

Dr. Timothy D. Baird
and Dr. Kiyah J. Duffey

Mr. William B. Baker
and Mrs. Susan N. Baker

Bill and Nancy Baldwin

Dr. Wendy Baldwin
and Mr. Delbert Futrell

Mr. Matthew C. Banfield
and Mr. Cody M. Solberg

Mr. Louis T. Banks
and Mrs. Leanne M. Banks

Mr. and Mrs. Gary Lee Barger

Ms. Bernadette Bascom
and Dr. Joseph Yonke

Mr. and Mrs. Robert
P. W. Baylor III

Mrs. Betty S. Bell
in Memory of Melvin H. Bell

Mr. Timothy J. Bendel
and Mrs. Michelle M. Bendel

Sam Bernhard

Mrs. M. Ellen Beville
and Mr. Eddie N. Mitchell

Mrs. Dana A. Bischoff
*in Memory of Donald
A. Drapeau*

Ms. Susan L. Bland

Ms. Diane D. Bonsall

Dr. Charles W. Bostian
and Ms. Frieda F. Bostian
in Memory of Don Rude

Mr. Jonathan C. Boulter
and Mrs. Katie Boulter

Mr. and Mrs. John Boyd

Dr. Isabel S. Bradburn

David M. Breedy

Mr. and Ms. David T. Breon

Mr. Brian M. Britt
and Ms. Jessica Meltsner

Dr. Theodore G. Brna
and Ms. Pamela D. Brna

Mrs. Bonnie L.
and Mr. Michael Brown

Mr. Patrick R. Brown
and Mrs. Cynthia A. Brown

Mr. and Mrs. William
B. Brown Jr.
*in Memory of Bill
and Layne Brown*

Mr. Isaac D. Butler
and Ms. Anne M. Love

Ralph Byers

Mr. Larry Callihan

Mr. Michael T. Callihan
and Mrs. Kathleen A. Callihan

Mr. Thomas M. Callihan

Mrs. Rachael
and Mr. Boston Carberry

Mr. Travis M. Carr

Claire M. Castagno

Michael Childs
and Nancy Childs

Dr. Sherry A. Clouser

Dr. Dale W. Conrad
and Dr. Sherry Lynch Conrad

Ms. Janet L. Convery

Mr. Zai A. Cook

Mr. and Mrs. James Norman
Copeland
*in Memory of Paul Breske
and in Honor of Stan Kingma*

Ms. Brianna A. Corleto

Mr. Timothy G. Corvin
and Mrs. Nancy R. Corvin

Daniella N. Damiano

Mr. and Mrs. Steven
J. Davenport
in Memory of Paul Breske

Justin T. Dean

Mr. James P. Dixon
and Ms. Barbara D. Day

Ms. Patricia F. Donovan

Ms. Patricia A. Douglas

Dr. James M. Dubinsky
and Ms. Robyn W. Dubinsky

Mr. and Mrs. Robert P. Dunham

Mr. Harvey Joseph DuPont
and Mrs. Ann Chaney Raridon

Mr. and Ms. Kevin J. Edgar

Ms. Virginia L. Edwards
*in Honor of Edwin and
Melinda P. Talley*

SPECIAL THANKS

David and Teresa Ehrlich

Avery Eliades

Leslie Eliades

Mr. Carlos G. Elias

Kelley J. Elliott and David Elliott

Dr. David L. Emanuel
and Dr. Deborah E. Hammond

Mr. Carl J. Eng
and Mrs. Jane Kornegay Eng

Benjamin S. Epling

Ms. Kimberly M.
and Mr. James R. Erickson

Mr. Jon H. Fagan
and Mrs. Elizabeth M. Fagan

Lieutenant Colonel
Edie M. Fairbank

Mrs. Christine M. Farrell
and Mr. Joseph Farrell

Ms. Alice J. Ferneyhough

Ms. Karen L. Finch

Dr. and Mrs. Jack W. Finney

Mr. and Mrs. John A. Fitchett

Beverly B. Fleming

Ms. Lisa D. Forcke

Mr. Jerry R. Ford Jr.
and Mrs. Elizabeth A. Lohman

Mrs. Debbie G. Francis

Erin N. Freck

Dr. and Mrs. Jeremy
H. Freeman

Heather Froggatt

Ms. Laura P. Froggatt

Ms. Katarzyna Fthenos

Mr. and Ms. Terry C. Fulton

Dr. Ray A. Gaskins

Brian and Katie Gehrt

Sean Gilbert

Giles County fan
of Moss Arts Center

Major Matthew M. Gioia

Mr. Matthew W. Glowacki
and Miss Ashleigh E. Anderson

Jane Goette

Chad and Jaclyn Gotch

Mr. and Mrs. Philip Grubbs

Katelyn G. Haas
in Honor of Lisa Haas

Jean R. Hahn

Dr. Katherine L. Hall

Dr. Molly R. Hall

Dr. Jeannie Hamilton
and Dr. David Hamilton

Jennie and Cory Hamm

Manning H. Hanline

Dr. Jean Haskell

Ms. Angela Hayes

Drs. Stanley and Laura Hefta

Dr. William G.
and Ms. Joy Herbert

Ms. Lauren Herbstritt

Mr. and Ms. James Heyman

Ms. Laura R. Higdon
in Memory of Don Rude

Ms. Amanda M. Hill

Mr. Lawrence G. Hincker
and Mrs. Susan S. Hincker
Dr. Klaus H. Hinkelmann
Mr. John Hitchins
Shannon A. Hodous
Mr. and Mrs. Robert J. Hogan
Brian J. Holcombe
and Christina I. Caudill
Dr. Chris L. Howard
Sinan Huang
Mrs. Phyllis Hutton
Mr. Larry E. Jackson
and Dr. Lucinda H. Roy
in Memory of Don Rude
Diego A. Jaques Garcia
Ms. Linda F. Jilk
and Mr. Michael W. Stowe
Dr. Henry R. Johnson Jr.
Mr. Wayne Johnson II
and Mrs. Patricia Wooten
Mr. Harold W. Jones
and Mrs. Elisabeth J. Jones
Robert J. Jordan
Mr. and Mrs. Chris N. Kappas
John Kelly and Kelly Watts
in Honor of Susan M. Kelly
Dr. Barbara L. Kersey
in Memory of Paul A. Breske
Mr. David C. Kersey
Mrs. Kelly C. Kidney
and Mr. Chad A. Kidney
Ms. Kristen Y. Kim
Mr. Theodore E. King Jr.

Ms. Erin B. Kirkpatrick
Mr. Tommy Lam
Lauren K. Langston
Mr. David L. Lanham
and Mrs. Carol C. Lanham
Beth Larance
Ms. Patricia S. Lavender
and Mr. Charles A. Stott
Ms. Margaret A. Lawrence
Mr. and Mrs. Mark S. Lawrence
Mr. Brian J. Lee
Mr. and Mrs. W. Tucker Lemon
Emily and Ted Petrovic Li
Dr. Lee Lisle
and Dr. Ali Haskins Lisle
Mary E. Lombardo
Ms. Susan Lyon
and Dr. Leonard Lyon
Dr. Susan G. Magliaro
and Dr. Terry M. Wildman
in Memory of Don Rude
Dr. Brett F. Malone
and Ms. Edna L. Malone
Dr. Mary Marchant
and Mr. James Marchant
Mr. and Mrs. Christopher
D. Marin
Mr. and Mrs. Curtis A. Martin
Mrs. Lynn H. Martin
Mr. John P. Marty
and Mrs. Virginia Marty
Ms. Jeanine L. Matte
Mr. and Mrs. Joseph
S. McAlarnen

SPECIAL THANKS

Ms. Christine I. McCann

Alyssa M. McCormick

Ms. Meredith McCree

Mr. James McReynolds
and Ms. Pamela Philips

Matthew D. Meleney

Mr. Paulo H. Merlin
and Mr. Jacob A. Paul

James and Patricia Mills

Mr. and Mrs. Vincent F. Miranda

Mr. Nick Moga
and Mrs. Nancy M. Moga

Mr. Mark B. Mondry
and Mrs. Pamela L. Mondry

Mrs. Deborah H. Moody

Ms. Mary Denson Moore
in Memory of Dr. Don Rude

Dr. and Mrs. Donald E. Mullins

Mr. Christopher Munk
and Mrs. Michelle M. Munk

Mr. and Mrs. Richard Murphy

Ms. Lee S. Musgrave

Dr. Nirmal B. Mutunayagam
and Dr. Phyllis Markussen
*in Memory of Patricia Foster
Steiss*

Ms. Ragheda Nassereddine

Mr. and Mrs. Robert C. Nette

Dr. Wayne L. Neu

Mr. James Nicely

Mr. Terry K. Nicholson
and Ms. Terri L. Fisher

Mr. Justin T. Noble

Ms. Mary H. North

Mr. Keith B. Nunn
and Angie Nunn

Ms. Kelly E. O'Brien

Dr. Thomas H. Ollendick
and Ms. Mary C. Ollendick

Molly G. Parker

Dr. Everett B. Peterson

Lowrey L. Peyton

Dr. Arnold T. Poole
and Mrs. Margaret Poole

Mr. Jacob A. Porter
and Mrs. Cheryl B. Porter

Mr. Peter J. Potter
and Ms. Tracy Vosburgh

Reneé, Jason, and Laurel
Alarid Price

Mr. Mauricio A. Ramos

Mr. and Mrs. Michael J. Raphael

Mr. and Mrs. Christopher
L. Ricard

Kelly M. Richardson

Janet F. Ringley
and Ricky L. Ringley

Mr. and Mrs. Dwayne Roberts

Ms. Alma L. C. Robinson
and Mr. Matthew T. Raum

Ms. Michelle R. Robinson
*in Memory of John Howell
and Lila Eakin*

Sara C. Rodriguez

Mr. and Ms. Robert C. Rogers

Dr. Amy Roslevege

Dr. G.E. Russell
Dr. Roberta S. Russell
Dr. J. Thomas Ryan
and Mrs. Susan Bull Ryan
Mr. Todd E. Schenk and
Ms. Radka Schenk Kretinska
Ms. Helen M. Schneider
Dr. and Mrs. W. Eugene Seago
Ms. Sarah E. Sears
Mr. Mohammed S. Seyam
Ms. Marcia S. Shumsky
Judith and Dennis Sleighter
Mike and Susan Smith
Mr. and Mrs. Travis R. Smith
Ms. Aline R. Soares Souza
De Souza
Gregory M. Spencer
Mr. and Mrs. Robert P. Sprague
Mr. Chris A. Stafford
and Mrs. Kimberly Z. Stafford
Mr. and Mrs. Gregory R. Steele
Dr. Elisabeth M.
and Mr. John P. Steenken
Dr. and Ms. Alan W. Steiss
Dr. and Ms. Max O.
Stephenson Jr.
Mrs. Carol Ann Sumichrast
and Dr. Robert T. Sumichrast
Mr. Matt D. Summey
Ms. Kathleen Susano
Mr. William Symonds
Mr. Pedro Szalay

Dr. James M. Tanko
and Ms. Linda M. Tanko
Mr. Steven E. Tatum
Mr. and Mrs. Pyrros A. Telionis
Ms. Lisa M. Thamasett
Dr. Thomas C. Tillar Jr.
Mr. John W. Torget
and Mrs. Sandra G. Torget
Carmen T. Tran
Mr. and Mrs. Douglas L. Trott
Mr. Matthew A. Trump
Ms. Allison H. Vetter
Mr. Neal T. Vines
and Dr. Karen A. Vines
Ruth M. Waalkes
and Jeffrey C. Cole
Ms. Nicole L. Wagner
Ms. Anne M. Waldmiller
Hunter Walker
Mr. Kevin G. Wang
Dr. Anna K. Ward and
Mr. Christopher B. Bartlett
Dr. Charles O. Warren Jr.
and Mrs. Nancy N. Warren
Mr. and Mrs. William E. Watson
Benjamin P. Wells
Ms. Ashley N. White
Jay and Traci Whitlow
Mr. Samuel H. Williams
Mr. Claude L. Wimmer
and Mrs. Carol M. Wimmer
Ms. Leslie R. Winn

SPECIAL THANKS

Mr. and Ms. Douglas C. Witney

Dr. Mary Leigh Wolfe

Dr. and Ms. Craig A. Woolsey

Mr. and Mrs. Charles E. Yonce

Carter and Janet Younger

Ms. Mary J. Zody

**deceased*

ENDOWMENTS

The Moss Arts Center extends its appreciation to those donors who have established endowments in support of the arts.

Timothy and Michelle Bendel Center for the Arts Excellence Fund

Larry and Lindsey Bowman Center for the Arts Excellence Fund

Deborah L. Brown Center for the Arts Excellence Fund

Dr. Mark and Connie Froggatt Education Fund

Joe and Linda Hopkins Arts Enrichment Fund

Charles and Dorothy Lambert Endowment for the Arts

Moss Arts Center Endowment, established by Edwin and Melinda Talley

Dave and Judie Reemsnyder Center for the Arts Excellence Fund

Don and Carolyn Rude Fund for Excellence

G. Davis Saunders, Jr. Fund for Excellence

James M. and Margaret F. Shuler Fund for Excellence

Elizabeth McIntosh Mitchell Trauger Excellence Fund

great stuff!

matrixgallery.com



pottery, glass, jewelry, wood,
leather & more!

**MATRIX
GALLERY**

handmade jewelry
contemporary American crafts

115 N. Main St. • Downtown Blacksburg • (540) 951-3566



Blacksburg Books

new & used books
bookish things
locally-made gifts
author events
open mic nights
children's storytime
book club

open 7 days a week
540.315.9650
www.blacksburgbooks.com

401 S. Main Street
Suite 106
(parking around back)



Create your own fashion statement.



**Fringe
Benefit**

Bring this ad in within
10 days for 15% off!

105 N Main St, Blacksburg, VA 24060
www.fringebenefitva.com

LASERFORCE

BOWLING

IT'S
game
time
AT THE
SUPERBOWL

AXE THROWING LASER TAG BOWLING ARCADE GREAT FOOD
www.nrvsuperbowl.net

Chuck Mathena Center

Upcoming Shows

Chuck Mathena Center presents:



Tuesday
January 30, 2024



7:00pm

\$20 adults
\$17 kids
(12 and under)



Chuck Mathena Center
and Hitachi Energy present:



Dailey & Vincent

Saturday, February 24, 2024
7:00pm \$28

2 Stafford Commons, Princeton, WV 24740
304.425.5128
www.ChuckMathenaCenter.org

FIND YOUR NEXT GREAT **PERFORMANCE.**

2023-2024 SEASON

Sunday, December 17, 4 PM
Blacksburg Master Chorale
Messiah

Tuesday, January 23, 7:30 PM
Jazz at Lincoln Center Orchestra
with Wynton Marsalis

Wednesday, January 31, 7:30 PM
Cirque Mechanics
Zephyr: A Whirlwind of a Circus

Wednesday, February 14, 7:30 PM
Broadway in Blacksburg
My Fair Lady

Thursday, February 1, 7:30 PM
No-No Boy

Saturday, February 24, 7:30 PM
Mark Morris Dance Group
The Look of Love

Tuesday, February 27, 7:30 PM
An Evening with
Elizabeth Kolbert

Friday, March 15, 7:30 PM
Meshell Ndegeocello

Wednesday, March 20, 7:30 PM
Sō Percussion
with **Caroline Shaw**
and special guest **Shodekeh**

Tuesday, March 26, 7:30 PM
Las Cafeteras

Thursday, April 4, 7:30 PM
Ukulele Orchestra
of Great Britain

Saturday, April 13, 7:30 PM
Les Ballets Trockadero
de Monte Carlo

Wednesday, April 17, 7:30 PM
Small Island, Big Song

Friday, April 26, 7:30 PM
Bamberg Symphony
Jakub Hrůša, conductor
Hélène Grimaud, piano

Saturday, May 4, 7:30 PM
An Evening with Leslie Odom, Jr.



***Small Island,
Big Song***

"Beautiful
cinematography
and incredible
music ... one coherent,
jaw-dropping piece."

— *Billboard Asia, Japan*

35 YEARS IN BUSINESS!

**homes
additions
remodels**



creativity and intention since 1988
540.951.0358 • www.shelteralternatives.com



EYES on Main



**EXCEPTIONAL EYE CARE,
PERSONALIZED STYLE**

Caring eye doctors, trendy prescription eyeglasses
and the best eye exam in Blacksburg, Virginia.

620 N. Main St. Suite 101 Blacksburg
540-953-0136

EYESon620Main.com



Skip Slocum & Peg Warren
Associate Brokers

540.392.8891

skipandassociates@nestrealty.com

nestrealty.com/skipandassociates  

member of



YMCA AT VIRGINIA TECH

Did You Know

Key Moments in the YMCA at Virginia Tech's History

- 1873 The YMCA forms at Virginia Tech, focusing on religious and extracurricular activities for students
- 1892 71 out of 177 students of Virginia Tech are members of the YMCA
- 1893 YMCA publishes the first Student Handbook for Virginia Tech
- 1899 The cornerstone for the YMCA building, the first "Hokie Stone" building, is laid
- 1902 The YMCA building opens its doors and serves as the first Student Center at Virginia Tech
- 1918 Paul Derring, the longest serving General Secretary (40 years), begins work for YMCA
- 1970 Emily Stuart becomes Director of YMCA and begins the Int'l Programs and the Crafts Fair
- 1971 Open University, Y Hikes, and Soup & Substance Program were founded
- 1975 YMCA Thrift Shop opens in Blacksburg (Radford store opens in 2002)
- 1986 Project Home Repair returns to focus on general repairs for the at-need & elderly
- 1989 Lucy Lee Lancaster donates her home to the YMCA and the After School Program was founded
- 2006 YMCA purchases 1000 North Main and moves the Thrift Shop to that location



VOLUNTEER with the YMCA at Virginia Tech

Multiple volunteer opportunities to help us bring positive change to our community.

To find out more & to sign up please visit vtmca.org/volunteer/

"The best way to find yourself is to lose yourself in the service of others."
Mahatma Gandhi

Meet the Y Team

Mary Conner

Physics Major Class of 2026
YMCA Student Program Leader of Y Leaders Club and Rocktoberfest.

I love how the YMCA enriches the local community and is foundational to the campus.

I'm so proud to be a part of the YMCA at VT, and love to learn about the history of it.

In my spare time I am a member of the club gymnastics team and a member of the local music scene!

Meet more Y Team members in the next MAC program!



Velva Groover

YMCA at Virginia Tech Board Member
Retired Research Specialist Sr. in the School of Plant and Environmental Sciences

My favorite thing about the Y is the sustainability aspect. Reusing and recycling at the Thrift Shop and Y-Toss. And supporting other groups with donated items that can't be sold and otherwise would be put in the landfill.

The Y has supported the university in so many ways over the years. VT now has numerous offices, divisions, and countless employees to administer the services that the Y once provided such as course registration, gym type facilities, and a place to gather and find fellowship. Some current VT programs began with the Y and now are housed at the university. The international student programs began at the Y. Service learning and big event were modeled after Y programs.

My volunteer activities include sorting and pricing Toys and school supplies at the Thrift Shop; helping at Plenty! Food Pantry; planting and maintaining the alcoves in Floyd; various activities with Perfect Gift Shop.

