

MOSS  
ARTS  
CENTER

24/  
25

DEAR  
EVAN  
HANSEN

*broadway in blacksburg*

Monday, October 21, 2024, 8 PM

Street and Davis Performance Hall, Anne and Ellen Fife Theatre

 VIRGINIA  
TECH.

# WHERE LOVE *gathers*

When your loved one is living with an advanced illness, experiencing the joy of everyday moments is everything to us at Good Sam.

As the only community-based, non-profit hospice, our commitment is unwavering to you and your family. Through our Palliative Care and Hospice programs, we create the opportunity for love to gather, and for your moments to last a lifetime.



**Good Samaritan**  
Advanced Illness Care • Hospice

goodsam.care

**Roanoke**  
540-776-0198

**New River Valley**  
540-381-3171

Learn More About  
the Center for Caring



OR OPERA ROANOKE

'24 -'25 Season, "A Family Affair"  
Tickets starting at \$23!  
OPERAROANOKE.ORG

Crossroads Live  
presents

# DEAR EVAN HANSEN

Book by  
STEVEN LEVENSON

Music and Lyrics by  
BENJ PASEK AND JUSTIN PAUL

MICHAEL FABISCH HATTY RYAN KING BRE CADE CAITLIN SAMS  
ALEX PHARO JEFF BROOKS GABRIEL VERNON NUNAG MAKENA JACKSON  
MICHAEL PEREZ MONICA BLUME JULIANNA BRAGA BLAKE EHRlichMAN  
JENNA KANTOR JARED SVOBODA

Scenic Design      Projection Design      Costume Design      Lighting Design      Sound Design  
DAVID KORINS      PETER NIGRINI      EMILY REBHOLZ      JAPHY WEIDEMAN      NEVIN STEINBERG

Casting  
MURNANE CASTING  
CHAD ERIC MURNANE, CSA  
AMBER SNEAD, CSA

Music Coordinator  
TALITHA FEHR

Vocal Arrangements and  
Additional Arrangements  
JUSTIN PAUL

Music Director  
MICHAEL HOPEWELL

Production Stage Manager  
ANNA KLEVIT

Company Manager  
AARON MARTIN

Tour Management  
CROSSROADS LIVE  
NORTH AMERICA

Production Manager  
GREGG DAMANTI

General Manager  
ANDREW TERLIZZI

Executive Producer  
JAYNA NEAGLE

Exclusive Tour Direction  
THE BOOKING GROUP  
MEREDITH BLAIR

Tour Marketing and Publicity  
BOND THEATRICAL

Social Media  
THINK TANK  
MARKETING

Direction Recreated by  
DANNY SHARRON  
MARK MYARS

Associate Music Supervisor  
BEN COHN

Choreography Recreated by  
MARK MYARS

Music Supervision, Orchestrations, and Additional Arrangements  
ALEX LACAMOIRE

Original Broadway Production Choreography by  
DANNY MEFFORD

Original Broadway Production Direction by  
MICHAEL GREIF

Originally produced on Broadway by Stacy Mindich  
Originally presented by Arena Stage, July 9, 2015 to August 23, 2015  
New York premiere at Second Stage, March 26, 2025 to May 29, 2016

Dear Evan Hansen is presented through special arrangement with  
MUSIC THEATRE INTERNATIONAL, New York | [mtishows.com](http://mtishows.com)

# cast

HEIDI HANSEN

Bre Cade

LARRY MURPHY

Jeff Brooks

EVAN HANSEN

Michael Fabisch

Michael Perez (select performances)

ALANA BECK

Makena Jackson

ZOE MURPHY

Hatty Ryan King

JARED KLEINMAN

Gabriel Vernon Nunag

CONNOR MURPHY

Alex Pharo

CYNTHIA MURPHY

Caitlin Sams

**VIRTUAL COMMUNITY VOICES** Jacob Anderson, Naree Asherian, Karalyn Clark, Vita Drew, Adam Dunson, Ayler Evan, Will Haley, Todd Hart, Robert Hyatt, Paul Johnson, Brandon Nix, Danica Ruiz, Jolana Sampson-Williamson, Christine Shebeck, Connor Simpson, Kate Steele, and Nicole Unger

## UNDERSTUDIES

Standbys and understudies never substitute for listed players unless a specific announcement for the appearance is made at the time of the performance.

Evan Hansen, Connor Murphy, and Jared Kleinman: Blake Ehrlichman

Evan Hansen and Connor Murphy: Michael Perez

Heidi Hansen and Cynthia Murphy: Jenna Kantor

Heidi Hansen, Cynthia Murphy, and Alana Beck: Monica Blume

Alana Beck and Zoe Murphy: Julianna Braga

Larry Murphy: Jared Svoboda

## DANCE CAPTAIN

Monica Blume

Dear Evan Hansen *will be performed with one 15-minute intermission.*



*The use of any recording device, either audio or video, and the taking of photographs, either with or without flash, is strictly prohibited.*

# musical numbers

## ACT I

<b>ANYBODY HAVE A MAP?</b>	Heidi and Cynthia
<b>WAVING THROUGH A WINDOW FOR FOREVER</b>	Evan and Company Evan
<b>SINCERELY, ME</b>	Connor, Evan, and Jared
<b>REQUIEM</b>	Zoe, Larry, and Cynthia
<b>IF I COULD TELL HER DISAPPEAR</b>	Evan and Zoe Connor, Evan, Alana, Jared, Cynthia, Larry, and Zoe
<b>YOU WILL BE FOUND</b>	Evan and Company

## ACT II

<b>SINCERELY, ME</b> (reprise)	Connor and Jared
<b>TO BREAK IN A GLOVE</b>	Larry and Evan
<b>ONLY US</b>	Zoe and Evan
<b>GOOD FOR YOU</b>	Heidi, Alana, Jared, and Evan
<b>YOU WILL BE FOUND</b> (reprise)	Company
<b>WORDS FAIL</b>	Evan
<b>SO BIG/SO SMALL</b>	Heidi
<b>FINALE</b>	Company

## MUSICIANS

Michael Hopewell, *music director and keys*  
Alex Gutierrez, *associate music director and keys cover*  
Jerome Kava, *violin and concertmaster*  
E.R. Squatrito, *viola*  
Lydia Paulos, *cello*  
Perry Cowdery, *guitar 1*  
Jeffery Dunn, *guitar 2*  
Alex Schwarz, *bass*  
Daniel Santiago, *drums*

Randy Cohen, Randy Cohen Keyboards, *keyboard programmer*  
Enrico de Trizio and Scott Wasserman, *Ableton programmers*

# biographies



## **MICHAEL FABISCH, EVAN HANSEN**

A Minnesota-born actor/singer, Michael Fabisch recently earned a B.F.A. from the University of Michigan. Fabisch would like to extend his heartfelt gratitude to his brilliant mentors, his loving family, and his caring friends for their immense support.



## **HATTY RYAN KING, ZOE MURPHY**

National Tour debut! Previous credits include Anna in *Frozen: A Musical Spectacular* (Disney Cruise Line), Belle in *Beauty and the Beast* (Studio Tenn), and Cathy in *The Last 5 Years* (Everblue Arts). Huge thanks to Murnane Casting, the Price Group, and Mom. @hattyryanking



## **BRE CADE, HEIDI HANSEN**

Bre Cade is happy to be here! Past favorite credits include: *Rabbit Hole* (Becca), *Next to Normal* (Diana), *Into the Woods* (Baker's Wife), *Evita* (Eva Perón), *Cabaret* (Sally Bowles), and *Hedwig & the Angry Inch* (Yitzhak). Love to Zac. @brefreakincade



## **CAITLIN SAMs, CYNTHIA MURPHY**

National Tours: *Charlie and the Chocolate Factory*, *Elf*, and *Flashdance*. Regional: *Beautiful*, *CATS*, *Legally Blonde*, *Escape to Margaritaville*, *Brigadoon*, *Kinky Boots*, and many more. B.F.A. from WMU. Big thanks to my family. Big love to Dale. @unsophitcaitlin [caitlinsams.com](http://caitlinsams.com)



**ALEX PHARO, CONNOR MURPHY**

Alex Pharo is thrilled to make his national tour debut! Proud Auburn University deferred student. Credits: *The Wedding Singer* (Robbie), and *Natasha, Pierre, and the Great Comet of 1812* (Anatole). Shout out to Mom, Dad, Big Cheese, Larrie, DC, and Zola! @alexpharo



**JEFF BROOKS, LARRY MURPHY**

He/him. National Tours: *Chicago*, *A Bronx Tale*, *Bullets Over Broadway*, *Disney's Beauty & the Beast*, *Fiddler on the Roof*, *The Sound of Music*, and *Oklahoma!*. Netflix's *The Watcher*. Thanks to Todd, Bob, and everyone at ATB; my loving family; friends; and Stef. @bathrobedbrooks



**GABRIEL VERNON NUNAG,**

**JARED KLEINMAN**

Professional debut! Proud AMDA LA alumni: B.F.A. Much love to my family, friends, teachers, and Take 3 Talent! Regional: *Spring Awakening* (Moritz) and *In The Heights* (Benny). "I will carve my own path for myself." @gabrielnunag



**MAKENA JACKSON, ALANA BECK**

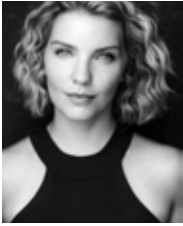
Makena Jackson is a New York City-based performer, making her National Tour debut in *Dear Evan Hansen!* TV: *Up Here* (Hulu). Makena would like to thank her endless support system for always believing in her. @makenajacksonn

# biographies, cont.



**MICHAEL PEREZ, ALTERNATE EVAN HANSEN AND CONNOR MURPHY UNDERSTUDY**

Michael Perez is honored to join *DEH!* Film/TV: Amazon Prime's *Uncle Frank*, Hallmark's *To Her With Love*, Netflix's *Insatiable*, AMC's *Halt and Catch Fire*, and Sundance's *When the Streetlights Go On*. Thanks to his family, Stewart Talent, Rikki Dale Management, and Appa. @mikey\_prez



**MONICA BLUME, HEIDI HANSEN, CYNTHIA MURPHY, AND ALANA BECK UNDERSTUDY AND DANCE CAPTAIN**

Some favorite credits include: Cirque Musica's *Holiday Wonderland* (National Tour), *Beautiful* (Weathervane Theatre), *Kinky Boots* (Fulton Theatre/Maine State Music Theatre), and *Blue Bloods* (CBS). Many thanks to Nicole at MMV. All my love to Justin. For my cousin, Matthew. #youwillbefound



**JULIANNA BRAGA, ALANA BECK AND ZOE MURPHY UNDERSTUDY**

Julianna Braga is thrilled to be joining *Dear Evan Hansen* for her National Tour debut! Montclair State B.F.A. Musical Theatre '24 graduate. Recent credits include *Seussical* (Gertrude McFuzz) and *Into the Woods* (Rapunzel). Thanks to my loved ones and teachers for everything. @juliannabragad





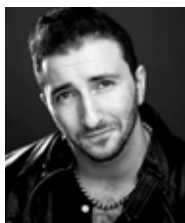
**BLAKE EHRLICHMAN, EVAN HANSEN,  
CONNOR MURPHY, AND JARED  
KLEINMAN UNDERSTUDY**

Blake Ehrlichman is ecstatic to be making his national tour debut! A graduate of Marymount Manhattan College. Huge thanks to the entire *DEH* team! Love to Mom, Dad, Brandon, family, and friends — for always believing. @blakejehrllichman



**JENNA KANTOR, HEIDI HANSEN  
AND CYNTHIA MURPHY UNDERSTUDY**

Jenna Kantor is thrilled to join the *DEH* family. Past roles: Trina (*Falsettos*), Tanya (*Mamma Mia!*), Lady of the Lake (*Spamalot*), Aldonza (*Mancha*), Paulette (*Legally Blonde*), and Velma (*Chicago*). She is a performing arts physical therapist at [jennakantorpt.com](http://jennakantorpt.com). She thanks Ryan, family, friends, and pets. [jennakantor.com](http://jennakantor.com)



**JARED SVOBODA, LARRY MURPHY  
UNDERSTUDY**

Past credits include *Bat Out of Hell* (Vegas Residency), *Jersey Boys* and *Newsies* (The Rev), and *Footloose* (NCL). Fans of documentaries may recognize him as Jesus in *Morgan Freeman's Story of God*. Jared is a proud graduate of NYU Tisch.

# biographies, cont.

## **STEVEN LEVENSON, BOOK**

Steven Levenson is a Tony Award-winning playwright, screenwriter, and television writer and producer. His plays include *If I Forget, Core Values, Seven Minutes in Heaven, and The Language of Trees*. He wrote the book for the musical *Dear Evan Hansen*, which won six Tony Awards, including Best Book and Best Musical, as well as the Olivier Award for Best New Musical.

## **BENJ PASEK AND JUSTIN PAUL, MUSIC AND LYRICS**

Oscar, Grammy, and Tony award-winning songwriters and producers Benj Pasek and Justin Paul are best known for their work on *La La Land, The Greatest Showman, and Dear Evan Hansen*. Other recent credits include *Only Murders in the Building; Spirited; Lyle, Lyle Crocodile; Aladdin; Trolls; Harlem; Dear Edward; Smash; The Flash; and Pink: All I Know So Far*. Previous theatre credits include *Dogfight, A Christmas Story, James and the Giant Peach, and Edges*.

## **MICHAEL GREIF, ORIGINAL DIRECTOR**

Five-time Tony-nominated director with three new musicals this season on Broadway: *Days of Wine and Roses, The Notebook, and Hell's Kitchen*. Broadway: *Rent, Next to Normal, Grey Gardens, Dear Evan Hansen, If/Then, and War Paint*. Other: *Make Believe (Second Stage); Our Lady of Kibeho and Angels in America (New York's Signature Theatre), The Low Road, Machinal, Dogeaters, and Romeo and Juliet (The Public)*.

## **DANNY MEFFORD, ORIGINAL CHOREOGRAPHER**

Danny Mefford has choreographed three Tony Award-winning Best Musicals: *Kimberly Akimbo, DEH, and Fun Home*. Directing: *Shrek (national tour), 25<sup>th</sup> Annual Spelling Bee (Kennedy Center), Becoming Liv Ullman (New York Fringe), and The Gorgeous Nothings and The Fitzgeralds of St. Paul (upcoming projects)*.

Off-Broadway highlights: *Love's Labour's Lost* (Drama Desk nomination, Best Choreography), *Miss You Like Hell*, *February House*, *Much Ado About Nothing*, and *Good Person of Szechwan*. International: *The Sound of Music* (tour). TV: *Rise*, *Dickinson*, and *Fleischman Is in Trouble*. M.F.A. in acting from Brown University/Trinity Rep.

**ALEX LACAMOIRE, MUSIC SUPERVISOR  
AND ORCHESTRATOR**

Alex Lacamoire has won four Grammys, three Tonys, and an Emmy for his work on *Dear Evan Hansen*, *Hamilton*, *In the Heights*, and FX's *Fosse/Verdon*. Music director, arranger and/or orchestrator credits include: Broadway revival of *Sweeney Todd*, *Message in a Bottle*, *9 to 5*, *Legally Blonde*, and *Wicked*. Film/TV credits include: Netflix's *Vivo* (composer), *In the Heights*, and *Tick, Tick... Boom!* (executive music producer).

**DANNY SHARRON, DIRECTION RESTAGER**

He/him. Danny Sharron is a director of new plays and musicals, committed to creating work by and about the LGBTQ+ community. He is currently the U.S. associate director for the Broadway revival of *Cabaret*, and previously oversaw four companies of *Dear Evan Hansen* (Broadway/London/Toronto/first national tour) as the show's senior associate director. New York City-based. Proud SDC member. Full credits: [dannysharron.com](http://dannysharron.com).

**BEN COHN, ASSOCIATE MUSIC SUPERVISOR**

Broadway: Music director for *Death Becomes Her* (upcoming), *Dear Evan Hansen*, and *Once Upon a One More Time*. Assistant conductor for *Wicked*. Music director for Clay Aiken and Stephanie J. Block. Conducted *Sunset Boulevard* and *Tick, Tick... Boom!* at the Kennedy Center. Ithaca and NYU grad. Lives in New York City with his husband and son.

# biographies, cont.

## **MARK MYARS, DIRECTION AND CHOREOGRAPHY RESTAGER**

Broadway resident director/choreographer: *Death Becomes Her*. Broadway associate choreographer: *Dear Evan Hansen* (National Tour, London), *The Cher Show*, *My Fair Lady* (National Tour, London), *SpongeBob Squarepants*, *War Paint*, and *If/Then* (National Tour). International dance supervisor: *Wicked* (National Tour, Chicago, London, Japan, Germany, Australia). Film/TV associate choreographer: *Isn't It Romantic* and *Schmigadoon*. Myars is a guest musical theatre teacher and teaches master classes nationwide. [markmyars.com](http://markmyars.com)

## **DAVID KORINS, SCENIC DESIGN**

Broadway: *The Who's Tommy*, *Here Lies Love* (Tony nomination), *Hamilton* (Tony nomination), *Beetlejuice* (Tony nomination), *Dear Evan Hansen*, *Just for Us*, *Mrs. Doubtfire*, *War Paint* (Tony nomination), *Bandstand*, *Misery*, *The Great Society*, *Motown the Musical*, *Vanya and Sonia and Masha and Spike*, *Annie*, *Bring It On*, *Godspell*, and *Passing Strange*. Television: *Grease: Live!* (Emmy Award) and the 91<sup>st</sup> and 94<sup>th</sup> Academy Awards (Emmy nomination).

## **PETER NIGRINI, PROJECTION DESIGN**

Peter Nigrini is one of Broadway's pioneering projection designers. His work includes *Hell's Kitchen*, *The Who's Tommy*, *Here Lies Love*, *MJ*, *Ain't Too Proud*, *Beetlejuice*, *Dear Evan Hansen*, *The SpongeBob Musical*, *A Doll's House Part 2*, and *Fela!*. In other venues and forms including *Ground* (Public Theater), *Lucia de Lammermoor* and *Don Giovanni* (Santa Fe Opera), *The Grace Jones Hurricane Tour*, and *Deep Blue Sea* for Bill T. Jones/Arnie Zane Dance.

## **EMILY REBHOLZ, COSTUME DESIGN**

Broadway: *Gutenberg! The Musical!*; *Jagged Little Pill* (Tony Award nomination); *Frankie and Johnny in the Clair de Lune*; *Getting the Band Back Together*; *Indecent*; *Oh, Hello on Broadway*; *If/Then*; *Vanya and Sonia and Masha and Spike*; and *Bloody Bloody Andrew Jackson*. Off-Broadway: Lincoln Center, Roundabout, NYTW, Public Theater, LAByrinth Theatre Company, Playwrights Horizons, Second Stage, and NY City Center, among others. Opera: The Santa Fe Opera and Opera Theatre of Saint Louis. M.F.A.: Yale

## **JAPHY WEIDEMAN, LIGHTING DESIGN**

20 Broadway shows: *The Heart of Rock n Roll*, *SHUCKED!*, *The Piano Lesson*, *Summer 1976*, *Dear Evan Hansen*, *The Visit*, *The Nance*, *Of Mice and Men*, *Airline Highway*, *Lobby Hero*, *Bright Star*, and *Charlie and the Chocolate Factory*. West End: *Dear Evan Hansen* (Noel Coward), *A Nice Fish* (Harold Pinter Theatre), and *Blackbird* (Albery Theatre). Production and lighting designer for Liz Phair's *Exile in Guyville* national tour, and for Hasan Minhaj's *The King's Jester* at Radio City and National Tour. Five Tony nominations for lighting design.

## **NEVIN STEINBERG, SOUND DESIGN**

Broadway: *The Notebook*, *Sweeney Todd* 2023 Revival (Tony Award), *TINA — The Tina Turner Musical* (Tony nomination), *Hadestown* (Tony award), *Hamilton*, *Dear Evan Hansen*, *Freestyle Love Supreme*, *The Cher Show*, *Bandstand*, *Bright Star*, *It Shoulda Been You*, *Mothers and Sons*, *Rodgers+Hammerstein's Cinderella* (Tony nomination), and *The Performers*. Over 30 other Broadway productions with Acme Sound Partners and five additional Tony nominations: *The Gershwins' Porgy and Bess*, *Bengal Tiger at the Baghdad Zoo*, *Fences*, *Hair*, and *In the Heights*.

# biographies, cont.

## **MURNANE CASTING, CASTING**

Murnane Casting is a first-class office in New York City specializing in casting theatre, film, and television projects nationwide. Murnane Casting focuses on developing new works and collaborating with emerging creators. Its mission is to curate exceptional ensembles of artists in a relaxed and imaginative casting environment. Learn more at [MurnaneCasting.com](http://MurnaneCasting.com).

## **KELSEY VENTER, ASSISTANT DIRECTOR**

### **AND ASSISTANT CHOREOGRAPHER**

Kelsey Venter was a member of the first national tour of *Dear Evan Hansen*, serving as the tour's dance captain and as the cover for Heidi Hansen and Cynthia Murphy. As a performer, Venter has worked at theatres across the country, including the Old Globe, American Conservatory Theater, Guthrie Theatre, and the Kennedy Center. Venter earned a bachelor's degree in Theater from San Diego State University and an M.F.A. from the American Conservatory Theater. [kelseyventer.com](http://kelseyventer.com)

## **TALITHA FEHR, MUSIC COORDINATOR**

Talitha Fehr has worked on over 75 national and international productions and tours since 2005. Highlights include *Sister Act*, *Mamma Mia!*, *School of Rock*, *Come Fly Away*, *Phantom of the Opera*, *Love Never Dies*, and *Priscilla Queen of the Desert*, as well as the 2010 Olympic Ceremonies in Vancouver. She dedicates her work on *Dear Evan Hansen* to the memory of her mentor, Sam Lutfiyya.

## **RANDY COHEN, KEYBOARD PROGRAMMER**

Cohen Keyboards has programmed or provided keyboard tech services for over 100 Broadway shows, including *Hamilton*, *Book of Mormon*, *Dear Evan Hansen*, *In the Heights*, and *Kinky Boots*. TV: *Sesame Street* and *Electric Company*. Thanks to Sam, Tim, and Nick.

## **MICHAEL HOPEWELL, MUSIC DIRECTOR**

Off-Broadway: *Once We Lived Here* (U.S. premiere); Tours: *My Fair Lady*, *The Phantom of the Opera*, *White Christmas*, and *Dirty Dancing*. Regional: Tuacahn Amphitheater, John W. Engeman Theater, and Gateway Playhouse; Recordings: Stage Stars Records (*Urinetown*, *The Wizard of Oz*, and *How To Succeed...*). Love to my family. Endless thanks to Ben, Talitha, and DAR. For Mom, who taught me how.

## **ANNA KLEVIT, PRODUCTION STAGE MANAGER**

Anna Klevit is elated to be part of *Dear Evan Hansen!* National Tours: *Annie*, *My Fair Lady*, and *Rudolph*. Selected regional credits: *What We Talk About...* (Old Globe); *Into the Woods*, *Matilda*, and *Fireflies* (South Coast Repertory); and *Memphis* and *Once on This Island* (Moonlight Amphitheatre). This one's for Mom and Dad.

## **KATY GENTRY, ASSISTANT STAGE MANAGER**

National tours: *Annie*. Selected regional credits: *Theater of the Mind*; *Rattlesnake Kate*; *Quixote Nuevo* (Denver Center); *Sound of Music* and *Sweeney Todd* (Asolo Rep); and *Tiger Style* (Olney Theatre Center). Gentry holds a B.F.A. from the University of Central Florida.

## **AARON MARTIN, COMPANY MANAGER**

Aaron Martin is from Birmingham, Alabama, and excited to be on the *DEH* team! National Tours (ACM): *Annie* and *Anastasia*. Regional: Maine State Music Theatre (ACM); Florida Repertory Theatre (CM); and Berkshire Theatre Group, Weston Playhouse (Intern). Thanks to the Crossroads Team, Katy, Anna, and Patrick. Love to family and friends.

# biographies, cont.

## **LINDSAY KAPLAN, ASSISTANT COMPANY MANAGER**

Lindsay Kaplan is thrilled to be on the road with *DEH!* Previous tour: *CATS!* Kaplan is a recent graduate from The Theater School at DePaul University. She would like to thank friends and family for always supporting her! IG @llindsaykaplan

## **GREGG DAMANTI, PRODUCTION MANAGER**

A 24-year theatre veteran, Gregg Damanti started as a production stage manager for Busch Entertainment, and later became the production manager for Blue Man Group in New York City. National tour credits include the first national of *On Your Feet!*, *CATS*, the first national of Lincoln Center's *My Fair Lady*, *Pretty Woman*, and now *Dear Evan Hansen*. "Thank you to Jen and Ripley, who I miss dearly while on the road, and love coming home to them both."

## **ANDREW TERLIZZI, GENERAL MANAGER**

Andrew Terlizzi comes to Crossroads Live after a 17-year touring career, 10 of which were with TROIKA Entertainment. Current GM credits: *Dear Evan Hansen* and *Pretty Woman: The Musical*. Select other credits: *Jimmy Buffett's Escape to Margaritaville*, *Bodyguard the Musical*, and *Priscilla Queen of the Desert*. Terlizzi holds a B.F.A. from the University of North Carolina School of the Arts.

## **THE BOOKING GROUP, TOUR DIRECTION**

The Booking Group has represented 28 Tony Award-winning Best Musicals and Plays. Current tours include *The Book of Mormon*, *Chicago*, *Come From Away*, *Dear Evan Hansen*, *Hadestown*, *Hamilton*, *Mamma Mia!*, *Mean Girls*, *MJ The Musical*, *Mrs. Doubtfire*, *Parade*, *Pretty Woman*, *SIX*, *Some Like It Hot*, *TINA — The Tina Turner Musical*, and *The Wiz*.



## **BOND THEATRICAL, TOUR MARKETING AND PUBLICITY**

BOND Theatrical is an independently-owned theatrical booking, marketing, and publicity company representing award-winning Broadway shows and live entertainment properties. BOND connects artists and audiences by forming strategic, authentic, and profitable partnerships between producers and presenters across North America. For a complete list of current projects, please visit [BondTheatrical.com](http://BondTheatrical.com).

## **NEURO TOUR, PHYSICAL THERAPY**

Carolyn Lawson, PT, founder and CEO of NEURO TOUR & Neurosport (physical therapy), global leaders in entertainment and performing arts medicine. We are honored to be part of this amazing touring company, *Dear Evan Hansen*. NEURO TOUR, Keeping performers happy, healthy, and on stage.

## **MUSIC THEATRE INTERNATIONAL**

Music Theatre International (MTI) is one of the world's leading theatrical licensing agencies, granting theatres from around the world the rights to perform the greatest selection of musicals from Broadway and beyond. Founded in 1952 by composer Frank Loesser and orchestrator Don Walker, MTI is a driving force in advancing musical theatre as a vibrant and engaging art form. MTI works directly with the composers, lyricists, and book writers of these musicals to provide official scripts, musical materials, and dynamic theatrical resources to over 70,000 professional, community, and school theatres in the U.S. and in over 60 countries worldwide. MTI is particularly dedicated to educational theatre and has created special collections to meet the needs of various types of performers and audiences. MTI's Broadway Junior shows are 30- and 60-minute musicals for performance by elementary and middle school-aged performers, while MTI's School Editions are musicals annotated for performance by high school students. MTI maintains its global headquarters in New York City, with additional offices in London (MTI Europe) and Melbourne (MTI Australasia).

# biographies, cont.

## **JAYNA NEAGLE, EXECUTIVE PRODUCER**

For Cirque du Soleil: *'Twas the Night Before*, *Paramour* (Broadway, Hamburg); *The Wiz* (NBC production). For BASE Entertainment: *Arrabal* (Buenos Aires, Toronto), *Jersey Boys* (Johannesburg, Asian tour), *Priscilla Queen of the Desert* (São Paulo), *The Lion King* (Singapore), *Jerry Mitchell's Peepshow* (Las Vegas), and *Wayne Brady: Making Sh#@ Up* (Las Vegas).

## **CROSSROADS LIVE, PRODUCER AND TOUR MANAGEMENT**

Crossroads Live brings together some of the world's top producers of live entertainment, now all under one banner. With offices in London; New York; Washington, D.C.; Sydney; and Melbourne — our global platform ensures the best-loved titles from Broadway and the West End can be embraced by audiences around the world. Crossroads Live North America, under the leadership of Angela Rowles, is an innovative, full-service theatrical production company delivering the Broadway experience to audiences in North America and beyond. Our 2024-2025 season: *Annie*; *Dear Evan Hansen*; *Dr. Seuss' How The Grinch Stole Christmas! The Musical*; *Pretty Woman*; *The Phantom of the Opera* (Asia); and *TINA* — *The Tina Turner Musical*.

*This is the first performance of Dear Evan Hansen  
at the Moss Arts Center.*

# dear evan hansen staff

## **For Crossroads Live**

### **North America**

#### **EXECUTIVE PRODUCER**

Jayna Neagle

#### **GENERAL MANAGER**

Andrew Terlizzi

Melanie Cahill,  
*assistant general manager*

#### **PRODUCTION MANAGER**

Gregg Damanti

Suzayn MacKenzie-Roy,  
*assistant production manager*

#### **COMPANY MANAGER**

Aaron Martin

Lindsay Kaplan,  
*assistant company manager*

#### **TOUR MARKETING AND PUBLICITY**

BOND Theatrical

[bondtheatrical.com](http://bondtheatrical.com)

DJ Martin Temah Higgins Mollie Mann

Marc Viscardi Wendy Roberts

Bailey Ford Elisabeth Reyes

#### **TOUR DIRECTION**

The Booking Group

Meredith Blair

Rich Rundle, Brian Brooks

Jonathan Pearson and Maryruth Grabez

[thebookinggroup.com](http://thebookinggroup.com)

#### **CASTING**

Murnane Casting

Chad Eric Murnane, CSA

Amber Snead, CSA

Nathaniel Riccio

#### **PRODUCTION STAGE MANAGER**

##### **Anna Klevit**

Katy Gentry,  
*assistant stage manager*

Monica Blume,  
*dance captain*

Richie Oulette and  
Javier Ameijeiras,  
*associate scenic designers*

G.E. Simmons Falk,  
*production carpenter*

Hayley King,  
*costume coordinator*

Liz Printz and Nina Job,  
*hair and makeup coordinators*

Daniella Pineda,  
*assistant costume coordinator*

Aislinn Smith and Mia Mooney,  
*production stitchers*

Ken Willis,  
*associate lighting designer*

Jeremy Goldenberg,  
*moving light programmer*

Joel Bulthuis,  
*production electrician*

Mackenzie Ellis,  
*associate sound designer*

# staff, cont.

Jamie Davis,  
*assistant sound designer*

Alec Harris,  
*production audio*

Kate Ducey,  
*associate projection designer*

Sean Hooper,  
*projection/video programmer*

Zoey Crow,  
*video animator*

Lorenzo Lagola, Jordan Brown,  
and Tristan Van Tine,  
*production video*

Sam Starobin, Tim Crook,  
and Nick Schenkel,  
*assistant keyboard programmers*  
Dillon Kondor,  
*guitar programmer*

Todd Hart, Vegas Voices,  
*Virtual Voices, producer*

Ian Kagey,  
*Virtual Voices, mixer*

Alex Magallanes,  
*production assistant*

## **HEAD CARPENTER** **Shane Lowry**

Matthew Lamers,  
*flyman*

Alyssa Cargill,  
*deck carpenter*

Ani Inman,  
*head props*

Kyle Musson,  
*head electrician*

Jessie Tossey,  
*assistant electrician, video*

Aaron Kurland,  
*assistant electrician, FOH*

Mitchel Rieth,  
*assistant audio*

Meg Schelling,  
*assistant audio*

Melina Hernandez,  
*wardrobe supervisor*

Jake Gomez,  
*crew swing*

NEURO TOUR  
Physical Therapy Inc.,  
*physical therapy company*

Epic Entertainment & Sports,  
*insurance*

Think Tank Marketing,  
*social media*

Jessica Kantor and Jessie Tossey,  
*social media captains*

BOND Theatrical  
Nilesha Alexander, Tia Altinay,  
Jenny Bates, Kolten Bell,  
Melissa Cohen, Steph Kelleher,  
Harrison Mootoo, Scotland Newton,  
Laura Rizzo, Madison St. Amour,  
Linda Stewart, Jacob Stuckelman,  
and Hannah Wallace  
*tour marketing and publicity office*

Evan Zimmerman for MurphyMade,  
*production photography*

Creative Goods,  
*merchandise provider*

Gena Byrd,  
*merchandise manager*

**FOR CROSSROADS LIVE  
NORTH AMERICA**

Angela Rowles,  
*chief executive officer*

Jayna Neagle,  
*executive producer*

Kori Prior,  
*executive producer*

Charisse Fontes,  
*vice president of people operations*

Brian Jacob,  
*vice president of finance*

Michael Yuen-Killick,  
*vice president of marketing*

Andrew Terlizzi,  
*senior general manager*

Heather Chockley,  
*director of production*

Tyler Soltis,  
*director of booking  
and engagements*

Gregg Damanti,  
*production manager*

Deana Marie Kirsch,  
*general manager*

Barrett Newman,  
*engagement manager*

Coree Howard,  
*warehouse manager*

Melanie Cahill,  
*associate general manager*

Emily Mui,  
*associate general manager*

Suzayn MacKenzie-Roy,  
*assistant production manager*

Drew Neitzey,  
*assistant production manager*

Sheila Lewis,  
*production accounting manager*

Travis Huebel,  
*production accountant*

Electra Walker,  
*staff accountant*

Alissa Klusky,  
*executive assistant to the CEO*

Joshua Cookson,  
*assistant warehouse manager*

Learn more about **Crossroads  
LiveNorth America** and the team:  
**[xroadslive.com](http://xroadslive.com)**

# credits

Scenery by TTS Studios. Lighting equipment from PRG. Sound equipment by MASQUE. Video equipment by 4Wall. Rigging by Phoenix Lighting and Rigging. Rehearsal Studio: Pearl Studios, New York City. Trucking by JANCO. Touring Company Lobby Signage by Express Signs in Frederick, Maryland.

## SPECIAL THANKS

*Dear Evan Hansen* rehearsed at Pearl Studios in New York, New York. Technical Rehearsals and Previews held at the Tobin Center in San Antonio, Texas.

**Dear Evan Hansen** is proud to collaborate with:

**Crisis Text Line.** In crisis? Text HELLO to 741741 for free, 24/7 crisis support.

**The Jed Foundation (JED)**, a nonprofit that exists to protect emotional health for our nation's teens and young adults. [Jedfoundation.org](http://Jedfoundation.org)

@DearEvanHansen

[dehtour.com](http://dehtour.com)



Backstage employees are represented by the International Alliance of Theatrical Stage Employees (IATSE).



United Scenic Artists Local USA 829 of the IATSE represents the designers and scenic painters for the American Theatre.



The director and choreographer is a member of the Stage Directors and Choreographers Society, an independent national labor union.

## WARNING

The photographing or sound recording of any performance or the possession of any device for such photographing or sound recording inside this theatre, without the written permission of the management, is prohibited by law. Violators may be punished by ejection and violations may render the offender liable for money damages.

# guest essay

*This essay is part of a series of writings by Virginia Tech faculty, staff, and community members that contextualize Moss Arts Center visiting artist performances.*

## ***On Friendship and Mental Health in Dear Evan Hansen***

As I write this essay, I am looking at my high school senior portrait. I asked my mom to straighten my naturally wavy, big hair. She struggled with the blow dryer and a brush for a good hour, but my hair still wasn't tame. In the picture, it's very apparent that I lost the fight with the blow dryer. I decided to take off my glasses for the picture, which I never did in my daily life. I couldn't focus on the camera, and I have a noticeable squint in the final product. My senior photo doesn't look like me. It looks like a person who was trying not to stand out. At the same time, it looks like a person who stood out too much because of the effort she put into fitting in. Evan Hansen and I shared a mutual struggle, which we have in common with teenagers across the world and across generations: we felt simultaneously overexposed and invisible.

Now, at a healthy distance from the challenges of high school, I research how teenagers thrive and why they sometimes struggle. The seemingly contradictory experiences of feeling scrutinized and overlooked, which are core to Evan Hansen's struggles, are the result of two psychological phenomena that characterize adolescence. The first is the imaginary audience: the perception that everyone around you is looking at you and judging you. The second is the personal fable: the belief that your experiences are unique and cannot be understood by others. The imaginary audience and the personal fable tell us that we are too awkward, too sweaty, destined to lead with the worst parts of us.

The imaginary audience and the personal fable are tricks that our minds play on us. Although people of every age experience these phenomena, they are magnified for teenagers because of the changes happening in their brains and their social environments, including in-person interactions and social media. Our peers provide fodder for these beliefs as we interpret meaning from our social interactions. Teenagers are especially attentive to what their peers think and say. A comment as simple as "nice shirt" can make you want to change your entire wardrobe.

## guest essay, cont.

Of course, our peer relationships are more than sources of anxiety and social comparison. They are also sources of connection and compassion. Having close friends in adolescence (and across the lifespan) is protective for mental health, possibly because these friendships give us a sense of belonging. Close friendships may also protect us against the effects of negative peer interactions. It's notable that peers are responsible for some of the most intense negative emotions, like anxiety and insecurity, as well as the most intense positive emotions, like joy, love, and kinship. Peers are so important because they provide us with visibility; it's uplifting when we feel seen and accepted, and it can be devastating when we feel seen and judged.

Evan Hansen shies away from the visibility of social scrutiny, and he strives for the visibility of love and acceptance. Over the course of the play, he learns how to correct the distortions in his self-perception. His belief that his authentic self is unworthy of acceptance caused him to withdraw, to "slam on the brakes" before even turning the key. As the audience, we have an outside observer's perspective on Evan. We see that, although his lack of confidence is destructive, he is a thoughtful, sensitive, and compassionate person who is worthy of love because of who he is. As Zoe tells him, "You don't need to sell me on reasons to want you."

When we see ourselves, we don't have the benefit of being an outside observer. We see the too-big hair, the too-thick glasses, or whatever your imaginary audience criticizes about you. *Dear Evan Hansen* challenges us to be more objective about ourselves, just as we can objectively observe the characters on stage. The message in the song *You Will Be Found* reminds the audience of our own inherent worth. It challenges us to turn toward the relationships that provide loving visibility. The song also challenges us to be the person who can be a safe haven from the judgment of the world.

*Rose Wesche joined the Human Development and Family Science department at Virginia Tech in 2019 as an assistant professor. Wesche's research focuses on how diverse interpersonal relationships, including friendships, romantic relationships, and casual sexual relationships, are*



*associated with adolescents' and young adults' well-being. She uses diverse statistical methodologies and theoretical perspectives to examine how interpersonal relationships create risks and benefits related to health. Wesche received a doctorate in Human Development and Family Science from Penn State and a bachelor's degree in psychology from Oberlin College.*

# tell us what you think!



We'd love your feedback on this performance. If you complete the short survey, you can enter for a chance to win two tickets to *An Evening with Ta-Nehisi Coates* on Friday, November 1, 2024.

[bit.ly/deh-feedback](https://bit.ly/deh-feedback)

*Please note, survey responses are anonymous. If you would like a response to your feedback, please email [mossartscenter@vt.edu](mailto:mossartscenter@vt.edu).*



## PK-12 PROGRAMS AT THE MOSS ARTS CENTER

Each year, wildly enthusiastic students — from PK through 12<sup>th</sup> grade — fill our theatre for free matinee performances by artists from all over the world. They explore our visual arts galleries during school tours and create and learn during hands-on workshops with artists. For many students, visiting the Moss Arts Center is the first time they've ever been to a performing arts facility or gallery. Why do kids need access to the arts? Engaging in artistic activities offers a wide range of skills that they will use throughout their lives.

Learn more at [bit.ly/moss-k12](https://bit.ly/moss-k12).



Your gift to the Moss Arts Center helps to support access to the arts, student engagement, and cultural diversity.

Through gifts like yours, we have been able to expand opportunities for PK-12 students in our region, deepen relationships with academic partners, continue to offer \$10 tickets to performances for Virginia Tech students, and provide experiential learning opportunities for students.

**Help us continue this work!**



**GIVE NOW**

[bit.ly/support-the-moss](https://bit.ly/support-the-moss)

PERFORMANCES | EXHIBITIONS | EXPERIENCES

# MOSS ARTS CENTER

FALL 2024  
EXHIBITION



## ***Never Spoken Again: Rogue Stories of Science and Collections***

*Curated by David Ayala-Alfonso*

**Through Sat., Dec. 14, 2024**

*All galleries*

Explore a traveling exhibition that reflects on the birth of modern collections, the art institutions that sustain them, and their contingent origin stories to reveal a universe of erasures, violence, and fortuity. Considering how institutional collections organize our lives, *Never Spoken Again* brings together artists whose works open up a critique of material culture, iconography, and political ecologies.

### **Free Related Event**

***Beyond the Frame***

**Gallery Tours**

Thurs., Nov. 14 and Dec. 12, 12 PM

*Moss Arts Center Grand Lobby*

Michael Rakowitz; *The invisible enemy should not exist – Seated Nude Male Figure, Wearing Belt Around Waist (IM77823) (Recovered, Missing, Stolen Series)*, 2018; Middle Eastern packaging and newspapers, glue, and cardboard; 37.75 x 28.75 x 28.75 inches; courtesy of the artist and Barbara Wien Gallery

# LAND ACKNOWLEDGEMENT

Virginia Tech acknowledges that we live and work on the Tutelo/Monacan People's homeland, and we recognize their continued relationships with their lands and waterways. We further acknowledge that the Morrill Land-Grant College Act (1862) enabled the commonwealth of Virginia to finance and found Virginia Tech through the forced removal of Native Nations from their lands in California and other areas in the West.

# LABOR RECOGNITION

Virginia Tech acknowledges that its Blacksburg campus sits partly on land that was previously the site of the Smithfield and Solitude Plantations, owned by members of the Preston family. Between the 1770s and the 1860s, the Prestons and other local White families that owned parcels of what became Virginia Tech also owned hundreds of enslaved people. Enslaved Black people generated resources that financed Virginia Tech's predecessor institution, the Preston and Olin Institute, and they also worked on the construction of its building.



**MOSS  
ARTS  
CENTER**

**WHAT'S BETTER THAN  
\$10 STUDENT TICKETS?**

**FREE ONES.**

\$10 student tickets.  
Any current student, any school.



Virginia Tech students, get free rush tickets when they're available.

Sign up: Text "arts" to 833-966-1838.

**VT VIRGINIA  
TECH**



# ***COOK COUNSELING CENTER***

*Your campus mental health support team*

## **CONNECT WITH US TODAY**

Take advantage of our flexible and personal approach to meet your needs. Call us at **540-231-6557** to schedule a Cook Connect Session, and see how we can be a resource for you.



Scan here to  
discover more.

## **OUR SERVICES**

Crisis Services  
Individual Counseling  
Group Counseling  
Psychiatric Services  
Sport Psychology  
Support Groups  
Embedded Counselors  
and more!



STUDENT AFFAIRS  
**COOK COUNSELING CENTER**  
VIRGINIA TECH

# 24/25 season

check out the great performances coming this season.

wed., oct. 30, 7:30 pm  
**cloud gate dance**  
theatre of taiwan  
*13 tongues*

fri., nov. 1, 7:30 pm  
**an evening with**  
*ta-nehisi coates*

thurs., nov. 7, 7:30 pm  
**united states air force**  
**heritage brass**  
co-presented with the  
school of performing arts

wed., nov. 13, 7:30 pm  
**cirque kalabanté**  
*afrique en cirque*

sat., dec. 7, 4 pm  
**roanoke symphony**  
**orchestra**  
*holiday pops spectacular*

fri., jan. 31, and  
sat., feb. 1, 7:30 pm  
**jaha koo**  
*cuckoo*

thurs., feb. 6, and  
fri., feb. 7, 7:30 pm  
**beowulf:**  
**the epic in performance**  
benjamin bagby,  
voice and medieval harp

fri., feb. 14, 7:30 pm  
**lakecia benjamin**

tues., feb. 18, 7:30 pm  
**czech national**  
**symphony orchestra**  
maxim lando, piano

thurs., feb. 27, 7:30 pm  
**kodo**  
*one earth tour 2025:*  
*warabe*

thurs., march 6, 7:30 pm  
**the dante quartet**  
brian thorsett, tenor

tues., march 18, 7:30 pm  
*broadway in blacksburg*  
**the book of mormon**

sat., march 22, 7:30 pm  
**a.i.m by kyle abraham**

tues., march 25, 7:30 pm  
**an evening with**  
*charles yu*

fri., march 28, 7:30 pm  
**circa**  
*opus*

wed., april 2, 7:30 pm  
**les arts florissants**  
*vivaldi's four seasons*  
*at 300*

théotime langlois  
de swarte, violin

thurs., april 24, and  
fri., april 25, 7:30 pm  
**george emilio sanchez**  
*in the court of the*  
*conqueror*

sat., may 10, 7:30 pm  
**chucho valdés and**  
**irakere 50**

tickets on sale now!

# MOSS ARTS CENTER STAFF

## OFFICE OF THE ASSOCIATE PROVOST FOR THE ARTS

**Ruth Waalkes**, *associate provost  
for the arts and executive director,  
Moss Arts Center*

**Devair Jeffries-Lee**, *program  
director, Arts@VirginiaTech*

**David Ehrlich**, *outreach fellow  
for the fine arts*

**Molly Parker**, *executive assistant*

## ADVANCEMENT

**Paul Brammer**, *chief advancement  
officer, Moss Arts Center and  
University Libraries*

**Kasey Socks**, *leadership gift officer*

## EXHIBITIONS

**Brian Holcombe**, *curator*

**Laura Higgins**, *exhibitions  
program manager*

## FINANCE AND ADMINISTRATION

**Liz Scharman**, *director  
of administration*

**Alyssa Watkins**, *director of finance  
and administration*

**Toni Cartee**, *business manager*

**Lori Compton**, *housekeeper*

**Destiny Culverhouse**, *housekeeper*

**Austin Elliot**, *building manager*

**Matt Hudson**, *IT operations  
manager*

**Garrett Mitchell**, *housekeeper*

**Herman Noble**, *building  
operations manager*

**Shirley Rose**, *housekeeper*

**Emily Wilkins**, *fiscal technician*

## MARKETING AND COMMUNICATION

**Katie Gehrt**, *director of marketing  
and communication*

**Susan Bland**, *associate director  
of communication*

**Avery Eliades**, *associate director  
of content and digital strategy*

**Shanin Glenn**, *graphic design  
manager*

**Ellery Huffman**, *marketing  
coordinator*

## PATRON SERVICES

**Jonathan Boulter**, *director  
of ticketing and patron services*

**Hannah Holbrook**, *house manager*

**Jamie Wiggert**, *box office manager*

## PRODUCTION

**Doug Witney**, *director  
of production*

**Robert Gainer**, *audio supervisor  
and associate director of production*

**Kyle Gavell**, *lighting supervisor*

**Laine Goerner**, *production  
and rentals manager*

**Forrest Harrell**, *stage and rigging  
supervisor*

**Joe Ingram**, *senior technician*

**CJ Jessie**, *senior technician*

**Jackson Stitzer**, *senior technician*

## PROGRAMMING

**Margaret Lawrence**, *director  
of programming*

**Bethany Costello**, *engagement  
manager*

**Beth Jessee**, *artist services  
assistant*

**Sarah M. Johnson**, *program  
manager*



# MOSS ARTS PARTNERS

The Moss Arts Partners (MAP) are ambassadors, advocates, and donors serving to advance and guide the mission of the Moss Arts Center. Thanks to our 2024-2025 MAP members for their leadership:

**Rosemary Blieszner**

**Catherine Breske**

**Deborah Brown**

**Stacy Brown**

**Fred Carlisle**

**Clem Carter**

**Connie Froggatt**

**Matt Gabriele**

**Rachel Gabriele**

**Steve Gerus**

**Ann Goette**

**Betty Hahn**

**Susan Hansen**

**Elizabeth Obenshain**

**LeAnna Pearson-Marcum**

**Nancy Beville Prichard**

**David Reemsnyder**

**Judie Reemsnyder**

**Louise Ridenour**

**Minnis Ridenour**

**Jim Shuler**

**Margaret Shuler**

**Ed Spencer**

**Tom Tillar**

**Kelli Whitfield**

**Jan Zentmeyer**

## EMERITUS MEMBERS

**Erv Blythe**

**Lindsey Bowman**

**Constance Cedras**

**Sally Cox**

**Betty Davenport**

**Carole Davis**

**CY Davis\***

**William Davis**

**Don Drapeau\***

**Libby Drapeau**

**Rebecca Ghezzi**

**Candi Kelly**

**Jim Monroe**

**Anne H. Moore\***

**Sherwood P. Quillen**

**Bob Quisenberry**

**Melinda Talley**

**Mary Ann Walker**

*\*deceased*

# SPECIAL THANKS

We are grateful for the generosity of our patrons and donors who sustain the Moss Arts Center with their annual gifts. The impact of all contributions, no matter the amount, is significant in helping us transform lives through exploration and engagement with the arts and the creative process. We are honored to have received cash donations during the period of July 1, 2023, through June 30, 2024, from the following:

## AMBASSADOR

Dr. E. Fred Carlisle  
and Mrs. Elizabeth A. Obenshain  
Clem and Georgia Carter  
Mrs. Sally Schweitzer Cox  
and Mr. John W. Cox  
Dr. Charles Y. Davis\*  
and Mrs. Carole C. Davis  
Dr. Mark and Connie Froggatt  
Mrs. Elizabeth Hahn  
and Mr. Douglas Chancey  
Mr. Howard C. Huang  
and Mrs. Laura A. Huang  
Mr. Thomas S. Lewis  
and Mrs. Earlene N. Lewis  
Leo and Ellen Piilonen  
Mr. Bruce Prichard  
and Mrs. Nancy Beville Prichard  
Ms. Sherwood P. Quillen  
David and Judie Reemsynder  
Dr. James M. Shuler  
and Ms. Margaret F. Shuler

## PRODUCER

Dr. Rosemary Blieszner  
and Dr. Stephen P. Gerus  
Erv Blythe  
Catherine K. Breske  
Ms. Deborah L. Brown  
Ms. Constance Cedras

Libby Drapeau  
*in Memory of Don Drapeau*

Ms. Ann Goette  
*in Memory of Tony Distler  
and Lindsay West*

Hampton Roads Community  
Foundation

Ms. Susan M. Hansen

Mrs. Candi M. Kelly  
and Dr. J. Michael Kelly

Faye Marcum,  
LeAnna Pearson-Marcum,  
and Casey Marcum

Mr. G. Robert Quisenberry  
and Mrs. Susan G. Quisenberry

Mr. Minnis E. Ridenour  
and Mrs. Louise Ridenour

The Easels

Dr. Edward F. D. Spencer

Ruth M. Waalkes  
and Jeffrey C. Cole

Mrs. Mary Ann Walker  
and Dr. Kenneth J. Walker

Ms. Kelli Whitfield

Mr. Glen A. Skinner  
and Ms. Jan P. Zentmeyer

## ASSOCIATE

Mr. Thomas L. Ackiss  
and Mrs. Ann L. Ackiss

Dr. Gregory T. Adel  
and Mrs. Kimberly S. Adel

Mrs. Rhonda K. Arsenault  
and Dr. Lance E. Arsenault

Ms. Patricia C. Ballard

Mr. Matthew C. Banfield  
and Mr. Cody M. Solberg

Mr. Andrew Beach

Dr. Suzanne Bentley  
and Dr. Ernest Bentley

Mr. Allan W. Beres  
and Mrs. Amy Beres

Dr. Vinod Chachra  
and Mrs. Ranji Chachra

Dr. Cyril R. Clarke  
and Dr. Jean Clarke

Larry and Patti Cowley

The DeWitt Family  
*in Memory of*  
*Joseph L. DeWitt ('16)*

Nancy Eiss

Mr. Juan P. Espinoza  
and Mrs. Kara Espinoza

Mr. James A. Everett III  
and Mrs. Karen B. Everett

Nancy J. Felch

Dr. William J. Floyd  
and Dr. Leslie D. Kay

Mr. and Ms. Terry C. Fulton

Dr. Kathleen Hancock  
*in Memory of Eric Gregory*

Mr. John T. Hasselmann  
and Mr. Keith R. Stemple

Dr. Deborah Hix  
*in Memory of*  
*Robert S. Schulman*

Mrs. Ann A. Hlusko  
and Mr. George P. Hlusko

Mrs. Tamara N. Hodsden

Dr. Patricia B. Hyer

Steve Jacobs

Mary V. Jones

Mr. and Mrs. W. Tucker Lemon

Mrs. Janice B. Litschert

Ms. Jeanne S. Lutze

Pete Marty

Janice McBee and Ben Johnson

Mr. Michael D. McCarthy  
and Dr. Nancy E. Meck

Dr. Anne McNabb  
and Dr. Richard M. Burian

Mr. Christopher Munk  
and Mrs. Michelle M. Munk

Mr. Thomas E. Olson  
and Mrs. Martha A. Olson

James D. Penny  
and Pamela J. Penny

Mrs. Linda J. Pfeiffer

Linda and Ray Plaut

Ms. Felice N. Proctor

Mr. and Mrs. James G. Rakes

Mary and Ron Rordam

Carolyn Rude  
*in Memory of Don Rude*

G. Davis Saunders Jr.

Dr. Richard D. Shepherd  
and Mrs. Laurie W. Shepherd

Knotresha Stewart-Osemobor

Dr. Dianzhi Sui and Feng Xu

Connie Swanson  
*in Memory of Richard L. Swanson*

Mr. Edwin H. Talley III  
and Mrs. Melinda P. Talley

Mr. John W. Torget  
and Mrs. Sandra G. Torget

Mr. and Mrs. Douglas L. Trott

Dr. Lee Wheeler  
and Mrs. Anne T. Wheeler

# SPECIAL THANKS

Ms. Beverly A. Williges  
*in Memory of*  
*Dr. Robert C. Williges*

Dr. Gary M. Worley  
and Ms. Sandra M. Worley

## FRIEND

Anonymous (2)

Florence M. Adamo

Sharon Quillen Adams  
*in Honor of Sherwood P. Quillen*

Mrs. Leslie Adelman  
*in Memory of*  
*Gloria Radford Hilton*

Eugene W. Allen

Mrs. Julia P. Allen  
and Mr. Timothy P. Allen

Mrs. Paula K. Alston  
and Mr. Thomas P. Alston

Ms. Susan G. Anderson  
and Dr. Kim J. Kipling

Kenneth Anthony  
and Barbara A. Winfrey Anthony

Mr. Anargyros A. Anton

Mr. Michael Apfeldorf  
and Mrs. Karen Apfeldorf

Marilena Aquino De Muro

Dr. Jeffrey E. Arbogast

Dr. Timothy D. Baird  
and Dr. Kiyah J. Duffey

Mr. William B. Baker  
and Mrs. Susan N. Baker

Bill and Nancy Baldwin

Robin C. Ball

Ballas Family  
*in Memory of Helen Ballas*

Mr. and Mrs. Gary Lee Barger

Mr. and Mrs. Robert P. W. Baylor III

Mrs. Betty S. Bell  
*in Memory of Melvin H. Bell*

Mr. Timothy J. Bendel  
and Mrs. Michelle M. Bendel

Robert N. Blackley

Gary T. Blakely and Mary E. Blakely

Susan L. Bland and Ronnie Bland

Drs. Mark A. Boles  
and Carol A. Boles

Dr. Travis and Marge Poole

Ms. Diane D. Bonsall

Michael Borowski

Dr. Charles W. Bostian  
and Ms. Frieda F. Bostian

Mr. Jonathan C. Boulter  
and Mrs. Katie Boulter

Ethan D. Bowser

Dr. Isabel S. Bradburn

Paul W. Brammer

Jennings W. Bray

David M. Breedy

Mr. and Ms. David T. Breon

Mackenzie K. Brodrecht

Mr. Patrick R. Brown  
and Mrs. Cynthia A. Brown

Dr. John K. Burton  
and Ms. Bonnie A. Guthrie

Mrs. Marilyn I. Butters  
and Mr. Stephen F. Butters

Mrs. Leigh Anne Byrd  
and Mr. David R. Byrd

Mr. Larry Callihan

Mary A. Callihan

Mr. Michael T. Callihan  
and Mrs. Kathleen A. Callihan

Philip J. Callihan

Mr. Thomas M. Callihan

Sophia M. Campana  
Dr. Geoff Campbell  
and Ms. Debrah A. Campbell  
Mrs. Rachael  
and Mr. Boston Carberry  
Mr. Travis M. Carr  
Mrs. Toni H. Cartee  
and Mr. James W. Cartee  
Rosina M. Carter  
Charles B. Chance  
Michelle Chen  
Dr. Lauren M. Childs  
Michael Childs and Nancy Childs  
Mr. Kenton L. Clark  
and Mrs. Stephanie C. Clark  
Ms. Rommelyn C. Coffren  
and Mr. Zachary B. Coffren  
Amanda R. Cohen  
Hannah Cohen  
Ms. Brianna A. Corleto  
Mr. Timothy G. Corvin  
and Mrs. Nancy R. Corvin  
Jeanne C. DaDamio  
Erik W. Dafforn  
Dr. Debbie Day and Mr. J.S. Brown  
Mr. James P. Dixon  
and Ms. Barbara D. Day  
Rachel C. DeLauder  
Russell A. Desrosier  
Dr. Elizabeth H. Domico  
*in Memory of Frances M. Russell*  
Lauren T. Doran  
Mrs. Heather M. Ducote  
and Mr. Bryan C. Ducote  
Cathy A. Duerbeck  
Mrs. Julie M. Earthman

Mr. and Ms. Kevin J. Edgar  
Ms. Patricia B. Edge  
and Mr. Robert M. Richardson  
Dr. Kenneth R. Edmison  
and Mrs. Sondra Edmison  
Ms. Virginia L. Edwards  
David and Teresa Ehrlich  
Avery Eliades  
Leslie Eliades  
Dr. David L. Emanuel  
and Dr. Deborah E. Hammond  
Mr. Carl J. Eng  
and Mrs. Jane Kornegay Eng  
Michael Etzler  
and Rebecca L. Etzler  
Kari A. Evans  
Ms. Jane Robertson Evia  
and Mr. Carlos Evia  
Mr. Jon H. Fagan  
and Mrs. Elizabeth M. Fagan  
Mrs. Christine M. Farrell  
and Mr. Joseph Farrell  
Ms. Alice J. Ferneyhough  
Adam H. Field  
Ms. Karen L. Finch  
Dr. and Mrs. Jack W. Finney  
Ms. Lisa D. Forcke  
Mr. Jerry R. Ford Jr.  
and Mrs. Elizabeth A. Lohman  
Dr. Jeremy H. Freeman  
and Mrs. Laura R. Freeman  
Richard M. Furey  
Robert K. Gainer  
Suzanne Gardner  
Dr. Ray A. Gaskins  
Tianyu Ge  
Brian and Katie Gehrt

# SPECIAL THANKS

Mrs. Emily J. Gibson  
and Mr. James E. Gibson

Sean Gilbert

Lauren and Jon Catherwood-Ginn

Shanin M. Glenn

Dr. Richard M. Goff  
and Mrs. Diane P. Goff

Mrs. Ciji N. Good  
and Mr. Kip C. Good

Dr. Rosemary C. Goss  
and Mr. Robert Goss

Chad and Jaclyn Gotch

Emma C. Guido

Andrew Gunsch

Mr. Robert P. Gutkowski  
and Mrs. Birgit P. Gutkowski

Monte B. Hager

Jean R. Hahn

Dr. Katherine L. Hall

Dr. Molly R. Hall

Dr. Jeannie Hamilton  
and Dr. David Hamilton

Jennie and Cory Hamm

Mr. James S. Hansbrough  
and Mrs. Jennifer K. Hansbrough

Heather Harper

Dr. Jean Haskell

Dr. Lenwood S. Heath  
and Mrs. Deanie H. Heath

Dr. William G. and Ms. Joy Herbert

Ms. Lauren Herbstritt

Wilfred Hill

Mr. Lawrence G. Hincker  
and Mrs. Susan S. Hincker

Liz Hinds

Hannah L. Holbrook

Brian J. Holcombe  
and Christina I. Caudill

Linda Holcombe

Russell Holcombe

Dr. Chris L. Howard

Theresa D. Hoyle

Sinan Huang

Mr. Lawrence D. Hudson  
and Ms. Mary E. Hudson

Matthew R. Hudson

Ellery Huffman

Mr. Andrew J. Hutchinson  
and Carly Hansen

Andrew Ingham

Dr. Robert C.  
and Mrs. Sandra N. Jackson

Carolyn Jake

Sarah S. Jarrett

Julia E. Jimmerson

Dr. Kylie H. Johnson  
and Mr. William C. Johnson

Dr. Gerald M. Jones  
*in Memory of  
Joanne Harper Jones*

Mr. Joseph M. Jones  
and Mrs. Laura A. Jones

Mr. and Mrs. Chris N. Kappas

Mr. Mahendra Kaul  
and Mrs. Virginia Kaul

Mrs. Michelle Keelan  
and Mr. Michael E. Keelan

John Kelly and Kelly Watts  
*in Honor of Candi Kelly*

Aalia Y. Khan

Kelly C. Kidney

Mr. Theodore E. King Jr.

Shoshana M. Knapp

Mrs. Charlotte D. Knepper  
and Mr. Jonathan Wright  
William R. Knocke  
John Kwak  
Ms. Lara K. Nagle  
and Dr. Vasily T. Lakoba  
Patricia S. Lavender  
Ms. Margaret A. Lawrence  
Mr. Robert H. Leonard  
and Ms. Deborah A. McClintock  
Rick Lewis  
Paul V. Louie  
Jackie Lowery  
Madison E. Lucero  
Ms. Susan Lyon  
and Dr. Leonard Lyon  
*in Honor of Professor Eric Lyon*  
Dr. Mary Marchant  
and Mr. James Marchant  
Julia and Chris Marin  
Mr. and Mrs. Curtis A. Martin  
Karina L. Martin  
Lynn H. Martin  
Mr. Michael J. Martin  
and Mrs. Anna G. Martin  
Timothy D. Marvin  
and Christian G. Marvin  
Ms. Jeanine L. Matte  
Mrs. Barbara E. Mayo  
and Dr. William F. Mayo Sr.  
Mr. and Mrs. Joseph S. McAlarnen  
Kacy M. McAllister  
Ms. Christine I. McCann  
Dr. Harry E. Mccoy  
and Dr. Catherine W. Mccoy  
David M. McDaniel  
and Mickie McDaniel

Benjamin C. Mcgraw  
Robert J. McKeown  
Dr. Michael A. McMahon  
and Ms. Drema K. McMahon  
McMillion & McMillion, PC  
Mr. Charles W. McPherson  
and Mrs. Lillian McPherson  
Mr. James McReynolds  
and Ms. Pamela Philips  
Jane R. Meggers  
*in Memory of  
Walter W. Robinson*  
Dr. Joseph S. Merola  
and Mrs. Catherine L. Merola  
Patricia Miller  
Mrs. Michele L. Miller  
and Mr. Patrick W. Miller  
Mr. Nick Moga  
and Mrs. Nancy M. Moga  
Mr. Mark B. Mondry  
and Mrs. Pamela L. Mondry  
Ms. Mary Denson Moore  
Alexander D. Munn  
Ms. Lee S. Musgrave  
Rajaie Nassar and Letitia Juday  
Enma B. Navarro  
Dr. Amanda J. Nelson  
Sonya J. Nicely  
Mr. Justin T. Noble  
Dr. George W. Norton  
and Dr. Marjorie J. T. Norton  
Mr. Keith B. Nunn and Angie Nunn  
Caroline G. O'Brien  
Madelyn R. O'Brien  
Suzanne O'Brien  
Brenda J. Oliver

# SPECIAL THANKS

Dr. Thomas H. Ollendick  
and Ms. Mary C. Ollendick

Daniel D. Orr

Mr. Donovan E. Owens  
and Mrs. Whitney L. Owens

Olivia M. Pagano

Isabella M. Panek

Molly G. Parker

Mr. Paul Patterson  
and Dr. Margaret Patterson

Mr. Paulo H. Merlin  
and Mr. Jacob A. Paul

Heidi G. Perdue

Mr. Michael R. Peters  
and Mrs. Kristin K. Peters

Dr. Everett B. Peterson

Holly H. Peterson  
and Gene Peterson  
*in Memory of Dan Buckley*

Heather W. Pharr

John Phillips

Dr. Joseph C. Pitt  
and Ms. Donna S. Pitt

Donovan Pittman

Dr. Paul E. Plassmann  
and Dr. Shyamoli C. Plassmann

Cherry O. Portz

Mr. Mauricio A. Ramos

Jessica Rich

Mr. Gregory S. Riffe  
and Mrs. Jenny K. Riffe

Mr. David C. Riggan  
and Mrs. Glenna Racer-Riggan

Janet F. Ringley  
and Ricky L. Ringley

Mr. and Mrs. Dwayne Roberts

Ms. Jane Robertson Evia  
and Mr. Carlos Evia

Ms. Alma L. C. Robinson  
and Mr. Matthew T. Raum

Kari C. Rogers

Dr. Roberta S. Russell

Dr. J. Thomas Ryan  
and Mrs. Susan Bull Ryan

Deba P. Saha

Mrs. Dawn S. Sain  
and Mr. Claude S. Sain

Caroline R. Sallee

Mrs. Virginia M. Salvo  
and Mr. Jack Salvo

Jude A. Sanborn

Rhett J. Sargent

Mr. Todd E. Schenk  
and Ms. Radka Schenk Kretinska

Mina E. Schubert

Anastasia H. Seevers  
*in Memory of  
Gloria Radford Hilton*

Mr. Mohammed S. Seyam

Lukas and XiXi Liu

Mr. James E. Shivas  
and Mrs. Tricia A. Shivas

Ms. Marcia S. Shumsky

Ms. Aline R. Soares Souza De Souza

Kasey N. Socks

Mr. Timothy J. Socks  
and Mrs. Pamela J. Socks

George S. South

Gregory M. Spencer

Mr. Chris A. Stafford  
and Mrs. Kimberly Z. Stafford

Ms. Frances C. Stephens  
and Mr. Nicholas C. Stephens

Dr. Keith R. Stephenson  
and Mrs. Julann Y. Stephenson

Dr. and Ms. Max O. Stephenson Jr.



John E. Stern  
Ms. Linda F. Jilk  
and Mr. Michael W. Stowe  
Mr. Matt D. Summey  
Ms. Kathleen Susano  
Mr. William Symonds  
Mr. Pedro Szalay  
Dr. James M. Tanko  
and Ms. Linda M. Tanko  
Mr. Steven E. Tatum  
Mrs. Monecia H. Taylor  
and Dr. Thomas C. Shelton  
Drs. Alex and Mary-Ellen Telionis  
Susan E. Terwilliger  
Ms. Lisa M. Thamasett  
Kimberly R. Thomason  
Mrs. Diane Tinkleman  
and Mr. Michael Tinkleman  
Mrs. Judy L. Trimble  
and Mr. Michael L. Emery  
Ms. Sharlyn Underwood  
and Mr. Paul T. Ely  
Mrs. Patty A. VanHassel  
and Mr. John H. VanHassel  
Ms. Allison H. Vetter  
Marie Waalkes  
*in Memory of Naomi G.  
and Robert J. Waalkes*  
Ms. Nicole L. Wagner  
*in Memory of  
Marliene R. Wagner*

Oral D. Walker  
Grayson Walker  
Hunter Walker  
Jasmine J. Walker  
Dr. Charles O. Warren Jr.  
and Mrs. Nancy N. Warren  
Ms. Ashley N. White  
Jay and Traci Whitlow  
Jamie C. Wiggert  
Mark B. Wigginton  
Emily and Paul Wilkins  
Ashley Wilson  
Mr. David W. Leonard  
and Ms. Kathleen C. Wilson  
Mr. Claude L. Wimmer  
and Mrs. Carol M. Wimmer  
Ms. Leslie R. Winn  
Mr. and Ms. Douglas C. Witney  
Dr. Mary Leigh Wolfe  
Mrs. Amanda K. Woolley  
and Mr. Brian G. Woolley  
Jared M. Woolly  
Zhiyuan Xu  
Carter and Janet Younger  
Megan C. Zalecki  
Helen H. Zhang  
Ms. Mary J. Zody

*\*deceased*

# ENDOWMENTS

The Moss Arts Center extends its appreciation to those donors who have established endowments in support of the arts.

Deborah L. Brown Center for the Arts Excellence Fund

G. Davis Saunders, Jr. Fund for Excellence

Timothy and Michelle Bendel Center for the Arts Excellence Fund

Larry C. & Lindsey Bowman Center for Arts Excellence Fund

Dave & Judie Reemsnyder Center for the Arts Excellence Fund

Moss Arts Center Endowment Fund, established by Edwin and Melinda Talley  
Don and Carolyn Rude Fund for Excellence

James M. and Margaret F. Shuler Fund for Excellence

Joe and Linda Hopkins Arts Enrichment Fund

Charles and Dorothy Lambert Endowment for the Art

Elizabeth McIntosh Mitchell Trauger Excellence Fund

Dr. Mark and Connie Froggatt Education Fund

Rosina and Dean Carter Endowment for Visual Arts Residency Program

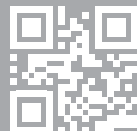
Charles Y. and Carole C. Davis '78 Visual Arts Residency Fund



## Creating Future Artists Starts With YOU!

This child's musical opportunity was provided by a grant from the MCEF and an amazing MCPS music teacher!

Learn how  
you can help  
us build the  
future.



**MCEF** MONTGOMERY  
COUNTY  
EDUCATIONAL  
FOUNDATION

**MCPS**  
Montgomery County  
Public Schools



*an evening with  
ta-nehisi coates*

fri., nov. 1, 7:30 pm

**MOSS  
ARTS  
CENTER**

artscenter.vt.edu



**Blacksburg's indie bookstore.**

new & used books

bookish things

locally-made gifts

author events

book club

open mic night

Appalachian literature

Open 7 days a week

540.315.9650

www.blacksburgbooks.com

401 S. Main Street

Suite 106

(parking around back!)

*great stuff!*

matrixgallery.com

pottery, glass, jewelry, wood,  
leather & more!

**MATRIX  
GALLERY**



handmade jewelry  
contemporary American crafts

115 N. Main St. • Downtown Blacksburg • (540) 951-3566



*Fringe Benefit*

Bring this ad in within  
10 days for 15% off!

105 N Main St, Blacksburg, VA 24060  
[www.fringebenefitva.com](http://www.fringebenefitva.com)

*Create your own fashion statement.*



## LIVE AT THE LYRIC FALL 2024



**Anya Hinkle & John Doyle**  
Sep 12



**North Mississippi Allstars**  
Oct 2



**Rachel Baiman**  
Nov 6



**Drivin' N Cryin'**  
Nov 19

Come enjoy nationally renowned musicians in an intimate setting at the historic Lyric Theatre in downtown Blacksburg! The Lyric Theatre has been providing quality arts & entertainment in the New River Valley for over 100 years!

The Lyric Theatre | 135 College Ave, Blacksburg (540) 951-4771 | [www.TheLyric.com/live](http://www.TheLyric.com/live)

*The Nutcracker Ballet*  
*A holiday tradition in the NRV!*  
 Blacksburg  
 BALLET  
 December 14, 2024  
 1:00pm and 6:00pm  
 at the Moss Arts Center

@blacksburgballet    [blacksburgballet@gmail.com](mailto:blacksburgballet@gmail.com)



#SHELTER  
ALTERNATIVES, INC.  
DESIGN BUILD TEAM



Embracing Building Science with  
Creativity and Intention Since 1988  
540.951.0358 [www.shelteralternatives.com](http://www.shelteralternatives.com)

BLACKSBURG  
MASTER  
CHORALE

*Join us for an unforgettable season!*

Oct 25	Lift Every Voice II
Dec 14	Majesty & Mirth
Dec 17	Holiday Sing-Along
Mar 30	Mozart's Requiem

[www.blacksburgmasterchorale.org](http://www.blacksburgmasterchorale.org)



LASERFORCE

IT'S  
game  
time  
AT THE  
SUPERBOWL

AXE THROWING LASER TAG BOWLING ARCADE GREAT FOOD  
[www.nrvsuperbowl.net](http://www.nrvsuperbowl.net)

Montgomery Museum  
OF ART & HISTORY

# CULTURAL CROSSROADS IN TRADITIONAL MUSIC & DANCE

MOSS ARTS CENTER  BLACKSBURG, VA

WEDNESDAY  
**NOVEMBER 6**

**7:00 PM**

**FEATURING**

LUA PROJECT - KAZUHIRO INABA - EARL WHITE BAND -  
JARRETT WILDCATT - PHIL JAMISON - GREEN GRASS CLOGGERS -  
DR DENA JENNINGS - JACK HINSHELWOOD -  
JACOB WRIGHT - NEW BALLARD'S BRANCH BOGTROTTERS -  
JUNIOR APPALACHIAN MUSICIANS - MIST ON THE MOUNTAIN  
INTRODUCTION BY THE CROOKED ROAD DIRECTOR TYLER HUGHES



Sponsored By

NATIONAL ENDOWMENT  
FOR THE  
**ARTS**  
arts.gov



Mid  
Atlantic Arts



TO PURCHASE TICKETS: Scan  
QR Code, Call Moss Box Office  
(540-231-5300) or Visit the  
Montgomery Museum



Did You Know



The YMCA VPI Golden Triangle Award is just over an inch long and stands for mind, body and spirit, a unity of purpose and balance that is essential to lives committed to service.

The Fellowship of the Golden Triangle was started in 1928 as a way to recognize men and women who contributed appreciably to Virginia Tech's campus and community through their involvement with the Y. It includes such illustrious members as Julian A. Burruss, Ellison A. Smyth, Walter S. Newman, John Whittemore, Charlie Yates, Leander Deitrich, George Litton, & Paul Reaves. You may recognize these names from several campus buildings!

The Golden Triangle award was begun in 1928 by Daniel Bowden, who was the Student President of the YMCA at the time.

Do you know a YMCA Golden Triangle recipient? Let us know at [ymca.vtymca.org](http://ymca.vtymca.org)



## Visit the 55th annual YMCA Artisan Fair

Nov 15- Nov 16, 2024  
at The Y Center  
1000 N. Main St. Blacksburg

Friday, November 15 from 9:00am-7:00pm  
Saturday, November 16 from 9:00am-5:00pm



## GIVING TUESDAY

GivingTuesday is a global  
day of generosity that  
will take place on  
November 26, 2024.

Do you know what the YMCA at  
Virginia Tech does for our community?

- Food Insecurity Initiatives- since April 2020 we distributed more than 70,000 meals to local children, and we are still going strong through our Meals On Main program!
- Our after school programs offer VT students opportunities to provide mentorship and tutoring to participants.
- Sustainability- the Y-TOSS initiative and our recycling program at the Thrift Shop work towards our efforts for greener environment!
- and so much more!

Make your donation today at  
[www.vtymca.org/donate](http://www.vtymca.org/donate)